

**High Tech
corporation smart
nexus**



**Smart Solutions &
Modular Operating
Theater Catalogue**





Integrated Modular Operating Room

Integration Parts

- Seal
- Ceiling & Floor Integration Parts



Modular Panels

- Stainless Steel Modular Panels
- Glass modular panels

Surgical Light



Laminar Air Flow (LAF)



Intercom



Operating Room Management Systems (ORMS)



Operating Room Door



Human Machine Interface (HMI)



Operating Room Flooring



Operating Room Ceiling



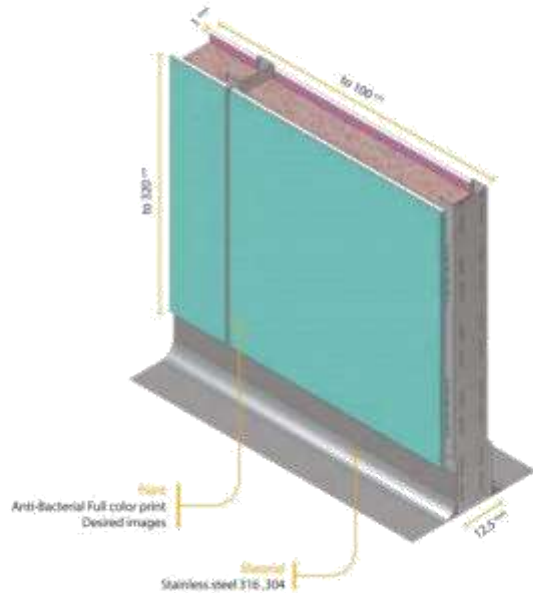
Modular Panels

- Stainless Steel Modular Panels
- Glass Modular Panels



Stainless Steel Modular Panels

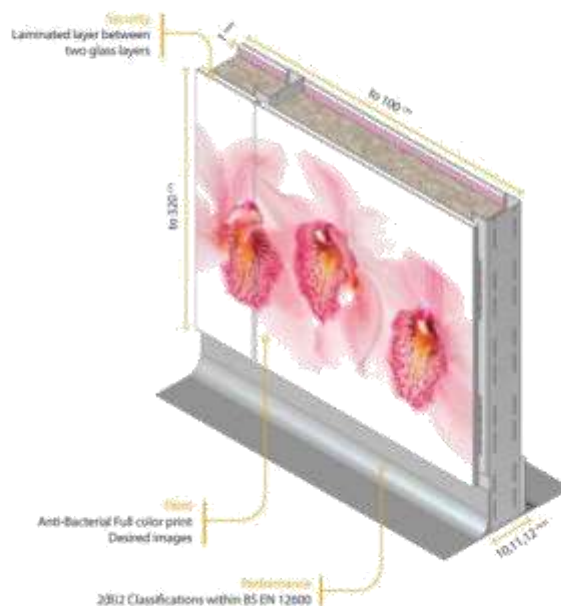
- Superior strength for the heavy weights and high-pressure bearings using the structure of galvanized profile of 2mm material
- Installation using inter-panel stainless steel screws
- Future service comfort with antibacterial silicone seal coverage with the highest precision
- Walls construction in the corners by bending the steel sheets and adding corner panels, the cross-section angle at all angles of more than 90 degrees (between 100 to 120 degrees depending on the room dimensions)
- Running interior panels' cuts to fit all kinds of outputs, outlets, displays, and other in-built and flash devices





Glass Modular Panels

- No erosion
- Ease of cleaning with a very smooth surface of this material which is very clean and resistant to the standard disinfectants
- Eco-friendly; %100 recyclable
- Ant-scratch and ant-shock
- Layout print on the interlayer
- The use of tempered glass for the high resistance to strike
- The use of two layers of laminated glass in order to avoid glass collapse in case of breaking
- Variation in the layout and color required in the ICU, CCU, pediatric wards etc...
- Resistance to the earthquake up to 9.1 Richter







Operating Room Door

Operating Room Door





Operating Room Door

- Automatic sliding door
- Telescopic door (Sliding)
- Swing automatic door
- Folding automatic door
- Aluminum Frame with Stainless Steel Cover
- Glass Panels

Each of the above doors can be provided as lead-covered and hermetic





Operating Room Ceiling





Operating Room Ceiling

- Performance against fire
- Non-combustible and fume free due to the tiles formation of mineral materials
- Acoustic capability
- Lightweight
- Thermal insulation
- Sound insulation





Operating Room Flooring





Operating Room Flooring

- Infection control property in accordance with ISO standards 8690
- Non-absorbable, impervious and without holes
- The ability to be installed with hot welding and the use of an integrated seamless tool for easy cleaning
- Dissipative conductive flooring with an Evercare coating with no need to wax and resistant to spots and chemicals
- High-tech, suitable for the areas with low electrical current
- The ability to be installed on concrete, ceramics, epoxy and PVC surfaces and (or) special surfaces (fireproof floors, moisture floors, etc.)
- Capable of installing 20 square meters per hour
- Saving time and cost over the life of the flooring
- Does not crack - Does not swell - Does not break
- With seamless welding capability, prevents water penetration





Integration Parts

<http://www.kaytee.org/parts/medical-integration-parts>

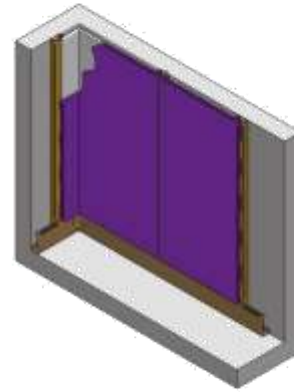
- Seal
- Ceiling & Floor
Integration Parts





Seal

- Antibacterial silicone profile with German material
- Design, production and injection inside the SAIRAN factory



Ceiling & Floor Integration Parts

- The use of integrated coating in the walls due to the high sensitivity and importance of infection control
- Avoiding any bulge and notch and decorations that create horizontal surfaces in the walls and cause accumulation of contamination
- Design of all horizontal and vertical intersections curved with a radius of at least 2 cm is in the first priority or using open angles at the corners
- Fitting of a specific muscle between the floor and the wall in the use of plastic and rubber flooring to prevent the formation of vertical corners at the intersection of the floor and the wall
- Use of special techniques and tools for other thinning materials to create curved corners





LAF

Laminar
Air
Flow





Laminar Air Flow (LAF)

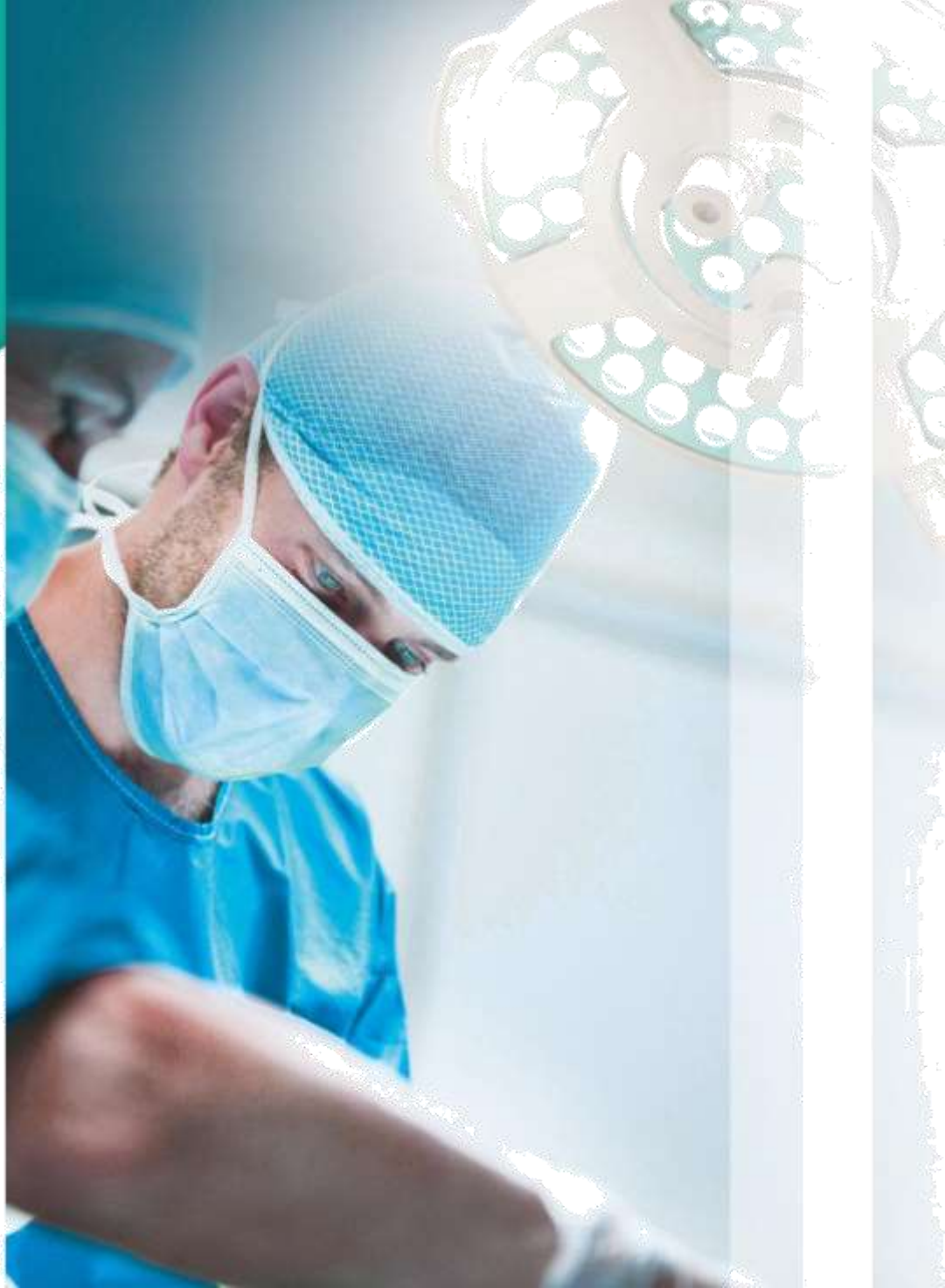
- The pressure chamber made of steel with a 1mm diameter in the body and the upper plate
- The body material can be fitted with stainless steel AISI 304 or polished steel RAL 9010
- The joints are rivet and insulated with silicon
- Steel is made up of U-shaped and Z-shaped profiles
- It is resistant to contamination and strike and is easily cleaned
- Central space of 60 by 60 cm for the passage of operating room equipment and light. Central space is insulated with plastic strip
- The body height is 450 mm
- Two HEPA Filters



Title	Explanation
Airflow Speed	0.18-0.38 m/s
Dimensions	1.83 m×1.23m(min)3.20m(max)
Number of producible models	8
Central cavity	Is available for the ceiling pillar lighting
Air source	Connection to the central air-conditioning machine
Body material	Stainless steel AISI 304
How to seal the outputs	Composition with laminizer layer and polyester fabric with aluminum frame



Surgical light





Surgical light

- Multicolor Medical LEDs
- Capability of Imaging Surgery Area Using Full HD Camera (Optional)
- Light Focus Adjustment
- Controllability Using Smart Hospital System
- Color Temperature Adjustment
- Integrated Laser Pointer
- Emergency Battery Backup (Optional)
- Monitor Display for Showing Surgery Required Images
- Video Conferencing
- Controllability Using Mobile, Tablet and Remote Control





ORMS

Operating
Room
Management
Systems



Operating Room Management Systems (ORMS)

- Controlling the surgical bed
- Controlling the operating room audio system
- Output stream under network
- Capture video images of medical equipment and patient information
- Connecting to a Barcode Reader or RFID Reader
- Can be Connected to BMS System
- Video conferencing for telemedicine
- In order to receive various video signals from HDMI (8 numbers of medical equipment inputs)
- Convertible to other inputs such as DVI, VGA, ...
- Two camcorder image inputs or network video conferencing
- Connecting to HIS
- Connecting to PACS
- Controlling the operating room lighting
- Controlling surgical moving light heads





Intercom



Intercom

- Protecting from unauthorized access
- TCP / IP Protecting with standard network wiring
- Support IoT standards
- Cost-effective installation by network connectivity sharing
- Maximizing the availability of the system, the station is equipped with advanced management capabilities to detect any error in the network or electronic components





HMI

Human
Machine
Interface





Human Machine Interface (HMI)

- Touch panels
- Proper built-in design for infection control
- Having a USB port for sending and receiving applications
- Data storage
- Can be connected to a variety of PLCs
- Can be connected to inverters, serial ports, any device with -485RS port
- Controlling the operating room lighting
- Controlling surgical moving light heads
- Controlling the surgical bed
- Controlling the operating room audio system
- Connecting to a Barcode Reader or RFID Reader
- Connecting to BMS system



Human Brain Monitor



Smart Hospital Solutions

Infrastructure

- Passive and active network LAN/WAN/WLAN/FTTX
- Server room
- Storage



Infotainment & IPTV

- Infotainment Terminal
- IPTV
- EMR medical tablet



Communication

- Smart nurse call system
- Smart Paging System
- Voice Over Ip(VoIP)



Safety & Security

- IP Camera
- Access Control
- Smart parking System
- Real Time Location System (RTLS)



Automation

- Digital signage
- Intelligent code announcement system
- Building Management Systems (BMS)



- Smart nurse call System
- Smart Paging System
- Voip
Voice
Over
Ip

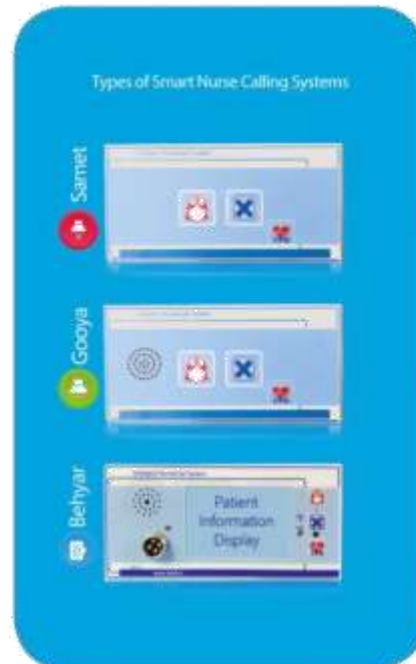
COMMUNICATION





Smart nurse call system

- Ability to integrate into handheld devices like mobile phones
- Ability to measure nurses activities and bonus allocation
- Responding for the needs of every type of Hospital
- Increasing patient's satisfaction
- Ability to record and follow-up conversation
- Increasing patient's satisfaction by providing a clear online service
- Ability to follow-up and citation by recording and logging all conversations
- Create a competitive atmosphere between nurses with the bonus system according to patient satisfaction factor
- Cost effective and tailored to meets every needs from a small clinic to modern hospital franchises
- Online nursing system, by connecting nurse's, supervisor's and manager's mobile phones to the nurse calling panels.





Communication

- Wired or Wireless installation
- Anti-bacterial covering with the ability to wash and sterilize
- Installation on medical console unit; separate call and cancel button for each bed
- Call button with spring cable, metal socket and washable
- Nursing station central device with 7 inch graphical display
- The answer key individually for each bed
- HD quality voice
- CPR button for calling emergency team or directly call their phone
- Ability to connect to existing sensors like smoke, motion and...



Behyar



Gooya



Samet

- Web based management software for generating different reports
- VoIP desktop intercom system
- Ability to prioritize each bed, internal paging system
- Recording and logging all the events
- Separate 5 inch LCD display for each bed
- Displaying alerts like "Normal", "Emergency" and ... on patients information display
- Turn red in case of "Emergency" alert
- Turn yellow in case of "Emergency in washroom" alert
- Ability to show videos or slideshows (Educational or occasional videos)
- Ability to two-way talk to specific patient directly
- Ability to two-way talk to other nursing stations
- Can attach headphones or hands-free devices or add wireless phone
- Ability to forward all requests to a specific nursing station
- Displays all current calls in nursing station





Smart Paging System

to manager

- ▶ Ability to allocate predefined codes for each department or ward
- ▶ Ability to integrate into HIS, IVR, CRM software for automatic announcement of special messages.
- ▶ Automatic announcement of predefined emergency or special alerts
- ▶ Online high quality playing of radio stations
- ▶ Less implementation cost comparing to traditional systems

Online local network or internet music portal with the ability to add music, allocate music groups and choose music.

Implementation using existing network infrastructure which means no separate or additional wiring needed.

Ability to zoning paging area according to the needs and ability to page each zone separately or together with some or all zones.

Ability to connect to traditional analog speakers without separate or additional wiring.

Ability to define and authorize intrase pages according to the needs.





Voice Over Ip (Voip)

- Using existing ethernet wiring
- HD Voice quality, record conversations and online monitoring
- Ability to move extensions easily
- Central phone book, showing the name and profile of each extension when calling
- Possibility to connect two or more buildings covered by a single telephone network
- Possibility to connect to the internal telephone network via the internet
- Possibility to use the mobile app as an internal phone
- Connecting to the HIS, CRM and ...automation software to provide phone information
- Sending SMS to the client or patient
- Possibility of internal or external video communication
- Online polling
- Automated lab result notification



Voicemail to Text/Email

The Cynoscion PBE can send a brief text message and deliver the voicemail as an email attachment.



Personal Assistant

Advanced find me/follow me feature will locate you at up to 5 programmed locations.



Hunt Groups

Ring multiple extensions when a call comes in. Ideal for sales and support teams.



Company Directory

A virtual receptionist provides customized messages connecting callers to pre-configured destinations.



Custom On-Hold Music

Upload custom files to play music or deliver company messaging.



Time-of-Day Routes

Routes calls based on schedules; configure for multiple groups.



Do Not Disturb (DND)

Sends calls directly to voicemail. Other routing options also available.



Custom Caller ID

Override the default network Caller ID with a custom description.





24h

VOIP

ISO KIA



Safety & Security

- IP Camera
- Access Control
- Smart Parking System
- RTLS
Real
Time
Location
System



+ HOSPITAL



IP Camera

- Two-way audio via a single network cable
- Use of a Wi-Fi or wireless network
- Distributed artificial intelligence (DAI)
- Remote accessibility
- Power over Ethernet (PoE)
- Better image Resolution
- IP Base
- Video Analytic
- Camera Monitoring
- Secure data transmission through encryption and authentication



Access Control

- Controls one door directly, with unlimited expansion capabilities
- TCP/IP communications (10/100Mbps)
- Password protected built-in web
- Live transaction monitoring
- Entry & exit reader capability
- RFID & NFC reader
- 250 Time Zones and 1,000 User/Door Groups
- Holiday support
- Scheduled Events
- Temporary Users
- Status LED's – Power, Communications, & Fault on-board
- web based control
- Door Status Monitoring Input





Smart Parking system

- Providing services related to the plate registration and plate reading
- Providing services for counting cars and people in installed cameras
- Determining the most top-rated points compared to the other points in the environment
- Specifying and report of the left objects in points
- Creating virtual fence and capture images while passing by
- Providing services for face detection
- Providing services for tracking suspicious persons
- Providing and installing thermal cameras and displaying the image temperature





Real Time Location System (RTLS)

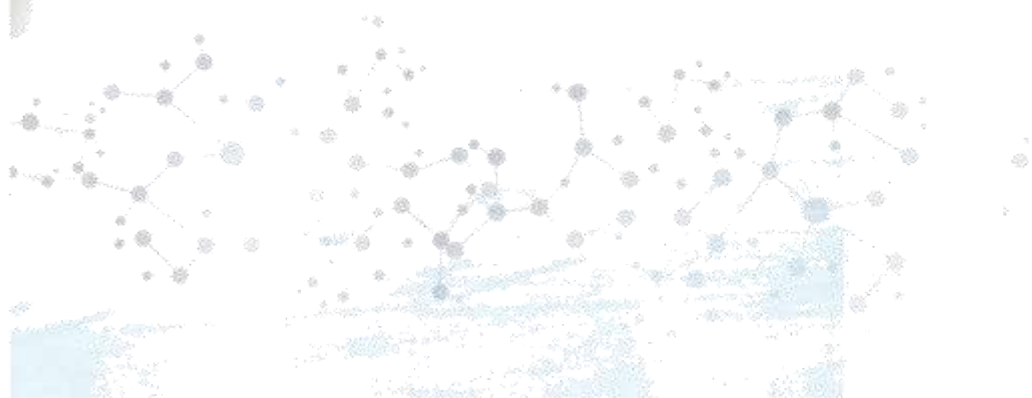
- Different Readers Antennas and Tags
- Medical Equipment Tracking
- Surgical Instruments or Drugs Tracking
- Patient Tracking
- Real-time Location System via WLAN Network for
- Doctors, Nurses , Patients and Equipment
- Warehouse Management
- Easily Integrated with All ERP or HIS, Software
- Easily ORMS Integration
- UWB & IPS Technology





Infotainment & IPTV

- Infotainment Terminal
- IPTV
- EMR Medical Tablet





Infotainment Terminal





IPTV

- Live TV & Radio with time shift
- Video and music on Demand Service
- HIS, PACS & BMS Integration
- VAS services: Game, Weather, Polling, etc.
- Installing on Bedside patient Console or Smart Displays
- Internet on TV





EMR Medical Tablet

- Removing all the costly printing of the patient file letter-head
- Removing all user errors in entering information in the patient file
- Impossible missing a sheet of patient records
- Reducing staffing costs for the secretaries and medical records
- Ability to track all records in the file by date, time and user
- Compliance with all standards of the Ministry of Health, forensic medicine and medical insurance
- Ability to view the tests results online and electronically in the patient's cartable
- No need for an additional metal cartable in the departments and medical records
- Available in MRI environments, operating rooms, labs, cleanrooms etc
- Ability to identify the user through finger reader
- Ability to record information through the patient's handcuff barcode or medication
- Possibility to take photos in the form of auto focus and high resolution of patient's conditions
- Paper documents and attach instantly to the patient's case





Infrastructure

- Passive And Active Network LAN/WAN/WLAN/FTTX
- Server Room
- Storage





Passive And Active Network LAN/ WAN/WLAN/ FTTX

- 10Gb/s Back Bone Network Speed
- Wireless 802.11 ac Support
- Structured Copper and Fiber Cabling
- Fiber Optic Networks (FTTH/FTTX)
- FTTX for Hospital Data Infrastructure



Server Room



Storage





Automation

- Digital Signage
- Intelligent Code Announcement System
- Building Management Systems (BMS)





Digital Signage

- Doctors Information
- Hospital Services
- Medical Services Advertising
- Remote Content Management
- Various Templates
- Various Schedules
- Optimized Network Infrastructure Bandwidth
- Installing on Smart Displays





Building Management Systems (BMS)

- Hospital Lighting Control
- Hospital Curtain Control
- Hospital HVAC Control
- Hospital Energy Management
- Hospital Data Center Control
- Access Control Integration
- CCTV Integration
- Remote Monitoring Via LAN or Internet
- 2D or 3D Graphical User Interface
- Various Protocols (TCP/IP, MODBUS, KNX)
- Building Automaton
- Air Quality
- Security
- Fire and Life Safety
- Power Monitoring (EPMS)
- Lighting
- Metering
- Mass Notification
- IT Infrastructure-Connectivity to all Systems
- Open Protocols/BACnet, etc



**High Tech
corporation smart
nexus**



**Operating Room
Equipment Catalogue**





Operating Room Equipment





Medical Suction

- C55F
- C25
- MC10
- Suction Accessories



Surgical light

- Luminous LED5
- Luminous LED3



Smart OR

- Modular Operating Room Walls
- Operating Room Management Systems (ORMS)



Smart OR

<http://www.royal.gov.uk/government/procurement/procurement>

- Modular Operating Room Walls
- Operating Room Management Systems (ORMS)





Modular Operating Room Walls

- Laminated Glass Panels
- Stainless Steel Panels
- Galvanized Panels
- Laminar Airflow
- Stainless Steel Door
- Operating Room Lighting
- Connecting to ORMS Via BMS Panel
- Various Anti-Bacterial Colors and Motifs
- Available for Operating Rooms, ICU, CCU, CSR and ...
- Fast Installation



- *Ultimate Elegance and Sterilized Implementation*



Operating Room Management Systems (ORMS)



- Operating Room Video Source Integration (HDMI, SDI, VGA, DVI, TCP/IP, PACS)
- Video Routing
- Video Streaming
- Video Recording (USB, NAS, SAN)
- Surgical Light Control
- Video Conferencing
- BMS Control Panel
- Music Control Panel
- HIS & PACS Control Panel
- RFID Reader



- *Now the Operating Room is Under Your Control*







Surgical light

- Luminous LED5
- Luminous LED3





Luminous LED 5

Technical Highlights

- Multicolor Medical LEDs
- Capability of Imaging Surgery Area Using Full HD Camera (Optional)
- Light Focus Adjustment
- Controllability Using Smart Hospital System
- Color Temperature Adjustment
- Integrated Laser Pointer
- Emergency Battery Backup (Optional)
- Monitor Display for Showing Surgery Required Images
- Video Conferencing
- Controllability Using Mobile, Tablet and Remote Control



- *Perfect Shadowless Partner of Surgeon*



Luminous LED 3

Technical Highlights

- Multicolor Medical LEDs
- Light Focus Adjustment
- Controllability Using Smart Hospital System
- Color Temperature Adjustment
- Integrated Laser Pointer
- Emergency Battery Backup (Optional)
- Monitor Display for Showing Surgery Required Images
- Controllability Using Mobile, Tablet and Remote Control

- *Perfect Shadowless Partner of Surgeon*





Technical Data of ISOKIA LED5 and LED3 Surgical Light

Parameter	Model	LED5	LED3
Illuminance (kLUX)		160	130
Color Temperature (Kelvin)		3500, 3750, 4000, 4250 4500, 4750	3500, 3750, 4000, 4250 4500, 4750
Focusable Light Field Size(mm)		180-300	170 - 270
Color Rendering Index (Ra)		92	92
Working Distance (cm)		70 - 140	70 - 140
Number of LEDs		45	30
Life Time of LEDs		Up to 50000	Up to 50000
Mount		Ceiling	Ceiling
Power Consumption (W)		180	160
Operating Voltage AC (V)		220	220

Camera with Interface Board for LED5(Optional)

Objective system	10-Fold Optical Zoom 12-Fold Digital Zoom F=3.8 mm (wide) to 38 mm (telephoto) F 1.8 to F 3.4
Video Signal	1080 p/50
Video Output	HDMI
Focusing System	Automatic & Manual
Minimum Object Distance	10 mm (wide) to 800 mm (telephoto)
Resolution (Megapixel)	2.38
Power Consumption (W)	6
Dimension (mm)	45.6 *48.8 *78
Weight (g)	260



Medical Suction

Yonghe Medical Equipment Co., Ltd. is a professional manufacturer of medical equipment.

- C55F
- C25
- MC10
- Suction Accessories





MEDICA C55F

Technical Highlights

- High Vacuum: - 90 kPa, 675 mmHg
- High Flow: 50 L/min
- Dimensions: 965x510x480 mm
- Weight: 17kg
- Safety Classification: IPX1
- In Accordance with
EN1079 -1, EN 60601-1, EN 60601-2 Standards
- Fast Vacuum Build Up
- Quiet in Operation
- Hygienic and Easy to Use

Application

- Plastic Surgery
- General Surgery
- Neurosurgery
- Outpatient Surgery Centers
- Emergency Units



- *Extreme Vacuum Is Now Available*



MEDICA C25

Technical Highlights

- High Vacuum: - 80 kPa, 600 mmHg
- High Flow: 20 L/min
- Dimensions: 300x180x350 mm
- Weight: 6 kg
- Safety Classification: IPX1
- In Accordance with
EN1079-1, EN60601-1, EN60601-2 Standards
- Small, Lightweight and Portable Design
- Various Vacuum Levels
- Quiet in Operation
- Easy to Use Operating Elements



- *Best Choice for an Ambulance*



MEDICA MC10

Technical Highlights

- High Vacuum: - 40 kPa , 300 mmHg
- High Flow: 16 L/min
- Dimensions: 350x180x300 mm
- Weight: 6 kg
- Safety Classification: IPX1
- Small, Lightweight and Portable
- Various Vacuum Levels
- Quiet in Operation
- Easy to Use Operating Elements



- *When Children Need Their Own Suction Unit*



Suction Accessories

- Jar 1 ,2 ,3 Liter
- Lid 1 ,2 ,3 Liter
- Over Fill Protection
- Suction Bag & Canister
- Patient Tube
- Jar Holder
- Bacterial Filter
- Pedal Switch



Suction Trolley

- Extremely Impact Resistant
- Antistatic Wheels







Certificates





CONTENT



Section 1

Cardiovascular

1.1 Patient Monitor	8
ARAD P10+	9
SmartView	10
ARAD P10	12
• FX7	13
• LX110	14
• Sina 5	15
1.2 Patient Monitor Accessories	16
• IOA Vision	17
• Mi-Cap C1	18
• Capnography & Multigas Accessories	19
• Monitor Accessories	20
• Trolley & Stand	22
1.3 Central Station	24
• Live W110	25
1.4 Telemedicine Solutions	26
• Health Care SADRA A15	27
• SAMA	28
• Web Based	29
• T220	30
• T110	31
1.5 Defibrillator/Monitor	32
• RELIVE DM5	33
1-6 OEM Modules	34
• OEM Modules	35



Section 2

Neurology

2.1 ElectroEncephaloGram	38
• E24	39
• E110	40
2.2 Consciousness Monitoring	42
• BIS Monitoring IOA Vision	43
2.3 EEG Accessories	44
• Wire & CAP & Electrodes	45



Section 3

Operating Room Equipment

3.1 Smart OR	48
• Modular Operating Room Walls	49
• Operating Room Management Systems (ORMS)	50
3.2 Surgical light	52
• Luminous LED5	53
• Luminous LED3	54
3-3 Medical Suction	56
• C55F	57
• C25	58
• MC10	59
• Suction Accessories	60
• Suction Trolley	60



Section 4

Spinal Implants

4-1 Lumbar Stabilization	64
Lumbar Intervertebral Fusion Cages	65
Lumbar & Thoracic Stabilization System	66
• Iliac Screw	67
• Dynamic Rod	67
• Universal Pedicle Screw	67
• Interspinous Spacer	68
• Lumbar Expandable Corpectomy Cage	69
4-2 Cervical Stabilization	70
• Cervical Stabilization System	71
• Cervical Intervertebral Fusion Cages	72
• Cervical Expandable Corpectomy Cage	73
• Mesh Corpectomy Cage	74
• Cervical Plating System	75
4-3 OsteoConductive Surface Technology	76
• Nano-HA Coating Technology	77
• Nano-Ti Coating Technology	78



Section 5

Smart Hospital Solutions

5-1 Automation	82
• BMS	83
5-2 Communication	84
• LAN/WAN/WLAN/FTTX	85

• VOIP	85
• Paging	86
• Nurse Call	86
5-3 Infotainment	88
• IPTV	89
• Digital Signage	89
5-4 RFID	90
• RFID and RTLS	91
5-5 Safety & Security	92
• CCTV	93
• Access Control	93
• Intruder Alarm	94
• Fire Alarm & Fire Fighting	94
5-6 Smart OR	96
• Modular Operating Room Walls	97
• Operating Room Management Systems (ORMS)	98



Section 6

Services	100
-----------------	-----



Section 7

History	102
----------------	-----



Section 8

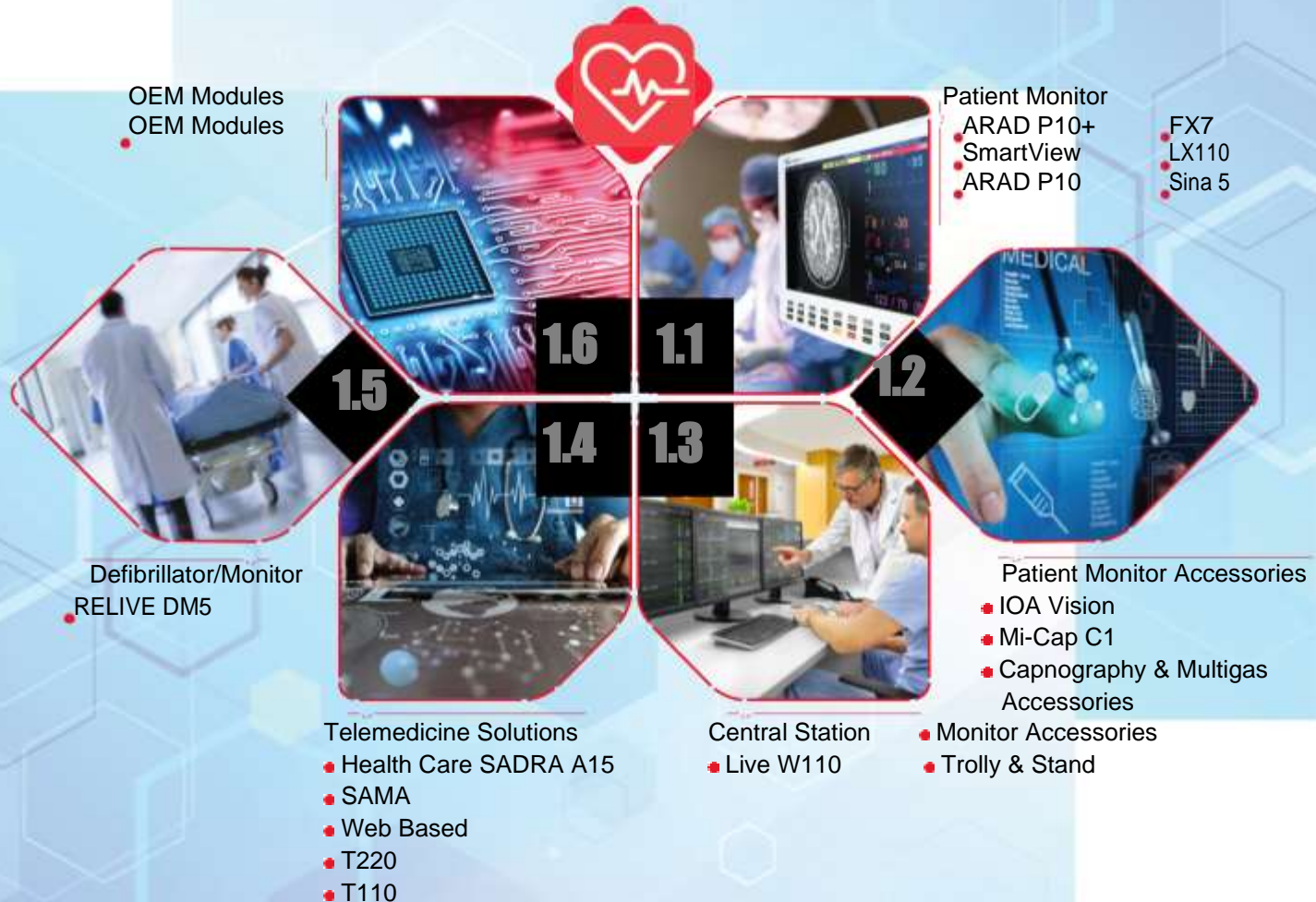
Certificates & Awards	106
----------------------------------	-----



Section 1

Cardiovascular





1.1. Patient Monitor



1.1

Section 1

Cardiovascular

Patient Monitor

- ARAD P10+
- SmartView
- ARAD P10
- FX7
- LX110
- Sina 5





Cardioset ARAD P10+

Parameters

- Waveforms: ECG (3, 7, 12 leads), RESP, Pleth, EEG (One line), IBP (2 channels)
- Numeric Parameters: HR, RR, SpO₂%, PR, NIBP, Temp, IBP (2 channels)

Options

- Arrhythmia Analyzer
- ST Segment Detection
- EMG & BIS
- CO₂ (SideStream)
- Multigas Analyzer (N₂O, O₂, AA1, AA2)
- ECG Out
- 2.0" Thermal Recorder
- Remote Patient Monitoring

Key Features

- Intuitive 19" Wide Multi Touch Display
- Wi-Fi / Bluetooth Communication
- Support • New Graphical User Interface
- Full HD External Display Support • Full Customizable Screen Views • Dynamic Auto Size Waves • Dual Bed Monitoring

NEW
PRODUCT



- *Reliable PACS & HIS Support*



SmartView Vital Signs Monitors

Parameters

- Waveforms: ECG (3, 7, 12 leads), RESP, Pleth, EEG (One line), IBP (2 channels)
- Numeric Parameters: HR, RR, SpO₂%, PR, NIBP, Temp, IBP (2 channels)

Options

- Arrhythmia Analyzer
- ST Segment Detection
- EMG & BIS
- Impedance Cardiography (ICG)
- CO₂ (SideStream)
- Multigas Analyzer (N₂O, O₂, AA1, AA2)
- ECG Out
- 2.0" Thermal Recorder
- Remote Patient Monitoring
- Two Additional IBP Channel

NEW
PRODUCT



■ SmartView MP22

NEW
PRODUCT



■ Smartview MP19





NEW

PRODUCT



■ SmartView MP15

NEW

PRODUCT



■ SmartView MP12

Key Features

- Equipment Class: Class I, Internally Powered, IPX1, Continuous Operation
- PACS & HIS Support
- Wi-Fi / Bluetooth Communication Support
- Intelligent Integrated Software with Comprehensive Vital Signs Monitoring
- Humanized Operation Interface
- High Resolution Display Option Improves Viewing
- Replaceable Wide Displays (12, 15 ,19, 22 Inch)
- Capability of Using Both Multi-Touch Screen Display & Keypad
- Fully Customizable Modules
- Dynamic Auto Size Waves
- Mother & Baby Patient Monitor
- Comprehensive Care with Vitals and Viewing
- Dual Bed Monitoring
- Wired and Wireless Networking with Continues Data Transfer
- External USB/Wi-Fi Printer Support

- *Multi-touch Screen, Stylish New Design*

1.1. Patient Monitor

Cardioset ARAD P10

Parameters

Waveforms: ECG (3, 7, 12 leads), RESP, Pleth, EEG (One line), IBP (2 channels)

Numeric Parameters: HR, RR, SpO₂%, PR, NIBP, Temp, IBP (2 channels)

Options

Arrhythmia Analyzer

ST Segment Detection

EMG & BIS

CO₂ (SideStream)

Multigas Analyzer (N₂O, O₂, AA1, AA2)

ECG Out

2.0" Thermal Recorder

Remote Patient Monitoring

Key Features

19" Wide Screen Display

User Friendly Software

Convenient Rotary Knob & Shortcut Keys

ECG Recording, NIBP Report and Trend for All Parameters

Printable Disclosure



WWW.ISOKIA.COM

Cardioset FX7

Parameters

- Waveforms: ECG (3, 7 leads), RESP, Pleth, IBP (2 channels)
- Numeric Parameters: HR, RR, SpO₂%, PR, NIBP, Temp, IBP (2 channels)

Options

- Arrhythmia Analyzer
- ST Segment Detection
- CO₂ (Sidestream)
- 2.0" Thermal Recorder

Key Features

- 15" color TFT Display
- Simple and User Friendly Operation
- ECG Recording, NIBP Report and Trend for All Parameters
- Lightweight (< 5 Kg Including Battery)



Fast boot less than 5 seconds

Cardioset LX110

Parameters

- Waveforms: ECG (3, 7 leads), RESP, Pleth, IBP (2 channels)
- Numeric Parameters: HR, RR, SpO₂%, PR, NIBP, Temp, IBP (2 channels)

Options

- Arrhythmia Analyzer
- ST Segment Detection
- CO₂ (Sidestream)
- 2.0" Thermal Recorder

Key Features

- 12.1" color TFT Display
- ECG Recording, NIBP Report and Trend for All Parameters
- Lightweight (< 5 Kg Including Battery)



Compact & Impressive Design



Cardioset Sina 5

Parameters

- Waveforms: ECG (3 ,7 leads), Pleth, RESP, IBP (2 channels)
- Numeric Parameters: HR, RR, SpO₂%, PR, NIBP, Temp, IBP (2 channels)

Options

- Arrhythmia Analyzer
- ST Segment Detection
- CO₂ (Sidestream)
- GPS / GPRS
- 2.0" Thermal Recorder

Key Features

- 5" color TFT Display
- ECG Recording, NIBP Report and Trend for All Parameters
- Extra Lightweight (< 2 Kg Including Battery)



Minimum Size, Maximum Portability



1.2

Section 1

Cardiovascular

Patient Monitor Accessories

- IOA Vision
- Mi- Cap C1
- Capnography & Multigas Accessories
- Monitor Accessories
- Trolley & Stand





BIS Monitoring IOA Vision

Measurement

- Index of Consciousness
- SQI, ESR, EMG and BIS Measurement

Technical Highlights

- Compliance with Europe Standards
- Offered Accessories and Peripherals by SAIRAN Medical Equipment Industries
- Easy Installation and Utilization
- Bluetooth Interaction with SAIRAN Patient Monitors
- Waveform Display on Patient Monitor and Saving as Trend
- Graphical Low Consumption LCD
- Minimum 6 Hours Operation Time Using External Rechargeable Battery

NEW
PRODUCT



- *What Does Complete the Operating Room ?*



Capnograph Mi-Cap C1

Measurement

- Mainstream Sensor Type
- Non-Dispersive Infrared Gas Analysis Technique
- Compact Multi-Channel Infrared Detector

Technical Highlights

- CO₂ Measurement Range: 0 -19.7% , 0 -150 mmHg, 0 - 20 kPa
- CO₂ Resolution: 0.1 mmHg
- CO₂ Measurement Accuracy:
 - 0 - 40 mmHg: ± 2 mmHg
 - 41 - 70 mmHg: $\pm 5\%$ of Reading
 - 71 - 100 mmHg: $\pm 8\%$ of Reading
 - 101 - 150 mmHg: $\pm 10\%$ of Reading
- Respiration Rate: 3 -150 Brpm
- Respiration Rate Accuracy: 1% ± 1 Brpm
- Circumstance Pressure: 86 to 106 kPa
- Power Demand: 5 V $\pm 5\%$ (max ripple 200 mVp-p)
- Power Consumption: <150 mA
- Storage Condition: 40°C to 70°C , < 90 % RH, Non-Condensing
- Operating Condition: 5°C to 50°C , < 10 to 90 % RH, Non-Condensing



Analyze Each Cycle of Respiration System





Capnography & Multigas Analyzer Accessories

- Respironics CO₂ Probe
- Extension Cable
- Adapter & Nomoline



- IRMA CO₂ Probe
- Extension Cable
- Adapter & Nomoline



- ISA CO₂ Probe
- Extension Cable
- Adapter & Nomoline





Monitor Accessories

Nellcor / Nonin SpO₂

- Adult, Pediatric and Neonate
- Adhesive, Reusable and Multisite Sensors



NIBP CUFFS

- Cuff for Adult, Pediatric and Neonate
- Single Use Cuffs



IBP

- Periodical Reusable Transducers
- Dome, Clamp and Bracket
- Extension Cable



Temp

- Temperature Probe-Skin (Adult, Pediatric and Neonate), YSI Compatible
- Temperature Probe-Rectal (Pediatric), YSI Compatible

**ECG**

- ECG Patient Cable 3,5,10 Wires
- Extension Cable (3m, 5m)

**Battery**

- Li-ion 12 v / 2.3 Ah
- Sealed Acid 12 v / 2.3 Ah



Trolley & Stand

Monitor Trolley

- Left and Right Rotation
- Bracket Horizontal/Vertical



Monitor Stand

- Easy to Use
- Excellent Quality Material & Design



High Tech corporation smart nexus





1.3

Section 1

Cardiovascular

Central Station

- Live W110
Wide Screen
Central Station





Live W110

Parameters

- Vital Signs of 16 Telemetry Systems or Bedside Patient Monitors through Wireless Network/LAN
- Up to 5 Graphs Simultaneously for Each Patient Including ECG (I, II, III, aVL, aVR, aVF, V), SpO₂% , Pleth, RESP, IBP1 and IBP2
- Patient Information, Continuous Records History and Nurse Calls

Key Features

- Wide 20" Touch Screen Display
- Two-Way Communication with Patient Monitors
- Arrhythmia Analyzer
- Portable Thermal Recorder & LaserJet Printer Support
- User Friendly & Elegant Interface

- *Intensive Care of All Patients Simultaneously*





14

Section 1

Cardiovascular

Telemedicine Solutions

- SADRA A15
- SAMA
- Web Based
- T220
- T110





HealthCare SADRA A15

Parameters

- ECG (3 ,7 ,12 leads), RESP, Pelth, IBP, SpO₂%, NIBP,
- Temp, CO₂ Glucose, Lipid and PCG Measurement

Key Features

- Touch Screen 10.1" Color TFT Display
- Real Time Patient Monitoring
- GSM (2G, 3G, 4G), LAN and Wi-Fi Data
- Interface Support all UVC Standard Oscopes
- One Channel Audio-In for Connecting
- Stethoscope Video Telephony and Consultation
- Real-Time Transmit Information to Central Viewer Station

- *Transfer Information Instead of Moving Patient*



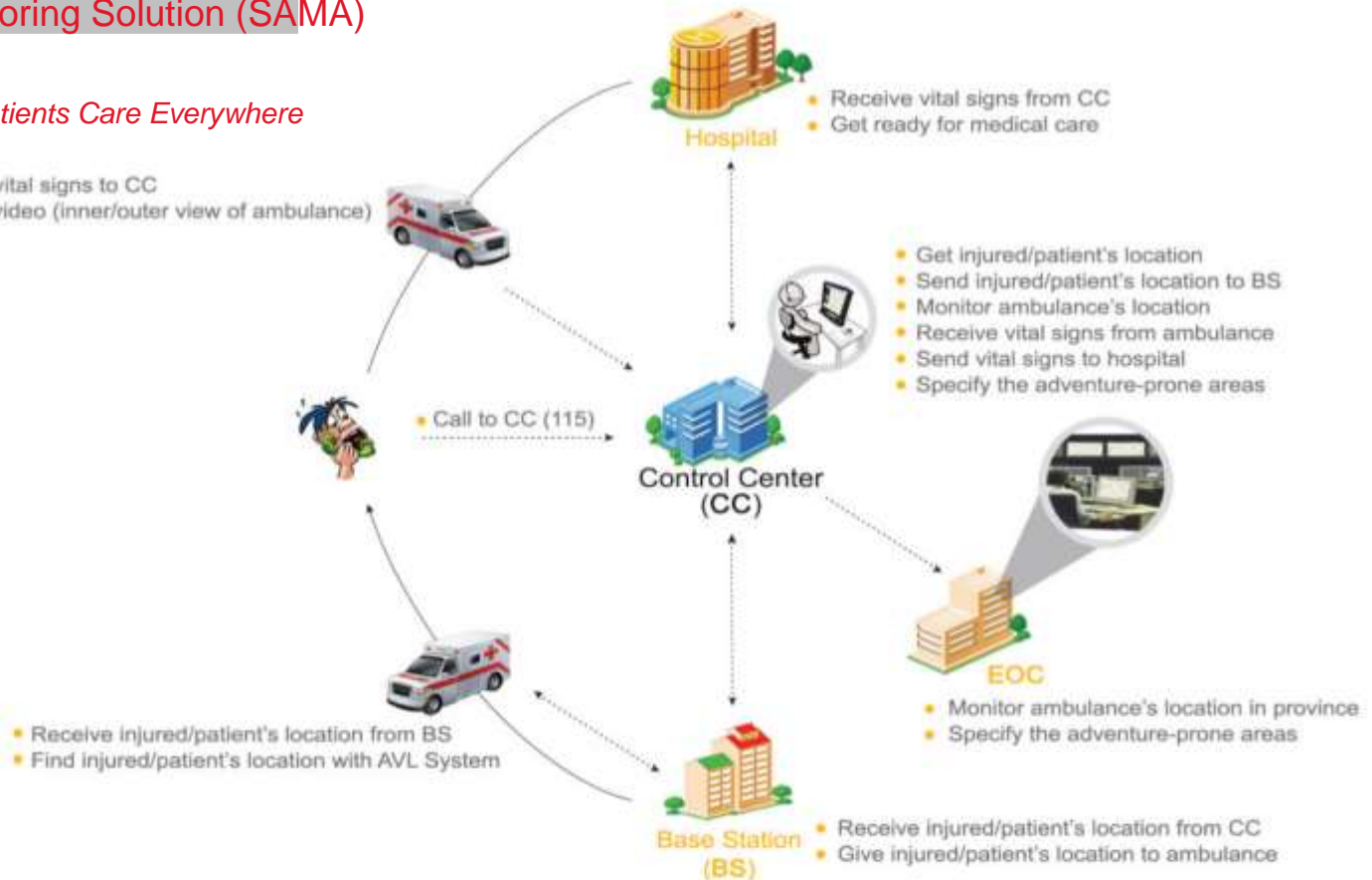
NEW
PRODUCT



TeleMonitoring Solution (SAMA)

• *Extend Patients Care Everywhere*

- Send vital signs to CC
- Save video (inner/outer view of ambulance)





Web Based Patient Monitors

Technical Highlights

- Access to Web Monitoring from www.sairanmed.ir Website
- Showing All Vital Signs from SAIRAN Patient Monitors
- Define Permission and Accessibility for the User
- 24 Hours Patient Care



- *Monitor Patients around the World*



Cardiopack T220

Telemetry Monitoring System

- Transmission of ECG Graph (I,II,V)
- Storing Data for 48 Hours on microSD Memory (up to 16 GB)
- 24 hours Operating Time for Transmission ECG Using Only 1*AA Battery
- Provides a Graphical Screen to Display All Monitored
- ECG Leads Nurse Call Button on the Transmitter
- Enhances Patient Comfort with a Compact, Lightweight
- Design Up to 16 Telemetry Transmitters Can Be Used Simultaneously in a Cardiac Care Center
- 8 Channels Receivers with Internal Antenna
- Frequency/Power Settings Can Be Modified in Accordance with the Local Country Regulations
- High Reliability, Narrowband Wireless Transmission and Digital Modulation
- In Accordance with EN60601-2-27, ANSI/AAMI EC13, IEC 60601-1, IEC 60601-2 Standards



- *Don't Confine Patient for Cardiac Care*

Cardiopack T110

Telemetry Monitoring System

Transmission of ECG Graph (I,II,III), SpO₂ %, Pulse Rate, Plethysmograph
Provides a Graphical Screen to Display All Monitored ECG Leads
Nurse Call Button on the Transmitter
8 Channels Receivers with Internal Antenna
High Reliability, Narrowband Wireless Transmission and Digital Modulation
Up to 16 Telemetry Transmitters Can Be Used Simultaneously in a Cardiac Care Center
48 Hours Operating Time for Transmission of Both ECG and SpO₂ % Using Only 2*AA Batteries
In Accordance with EN60601-2-27, ANSI/AAMI EC13, IEC 60601-1, IEC 60601-2 Standards



More Vital Signs Are Available Now with Cardiopack



1.5

Section 1

Cardiovascular

Defibrillator/ Monitor

- RELIVE DM5





RELIVE DM5

Defibrillator

- Energy: 1-200 J
- Waveform: Biphasic Truncated Exponential
- Mode: Manual, Cardioversion, AED
- Charging Time: Less than 6 Seconds

Noninvasive Pacing

- Waveform: Rectilinear, Constant Pulse
- Current: 0 - 200 mA
- Rate: 30 - 180 ppm
- Refractory Period: 340 ms (30-80 ppm); 240 ms (90-180 ppm)
- Mode: Demand or Fixed Rate

Numeric Parameters

- Waveforms: ECG, Pleth, IBP (2 channels), CO₂
- Numerical Parameters: HR, PR, SpO₂ %, Temp, IBP (2 channels), NIBP, EtCO₂



• *Saving Life is our Pleasure*



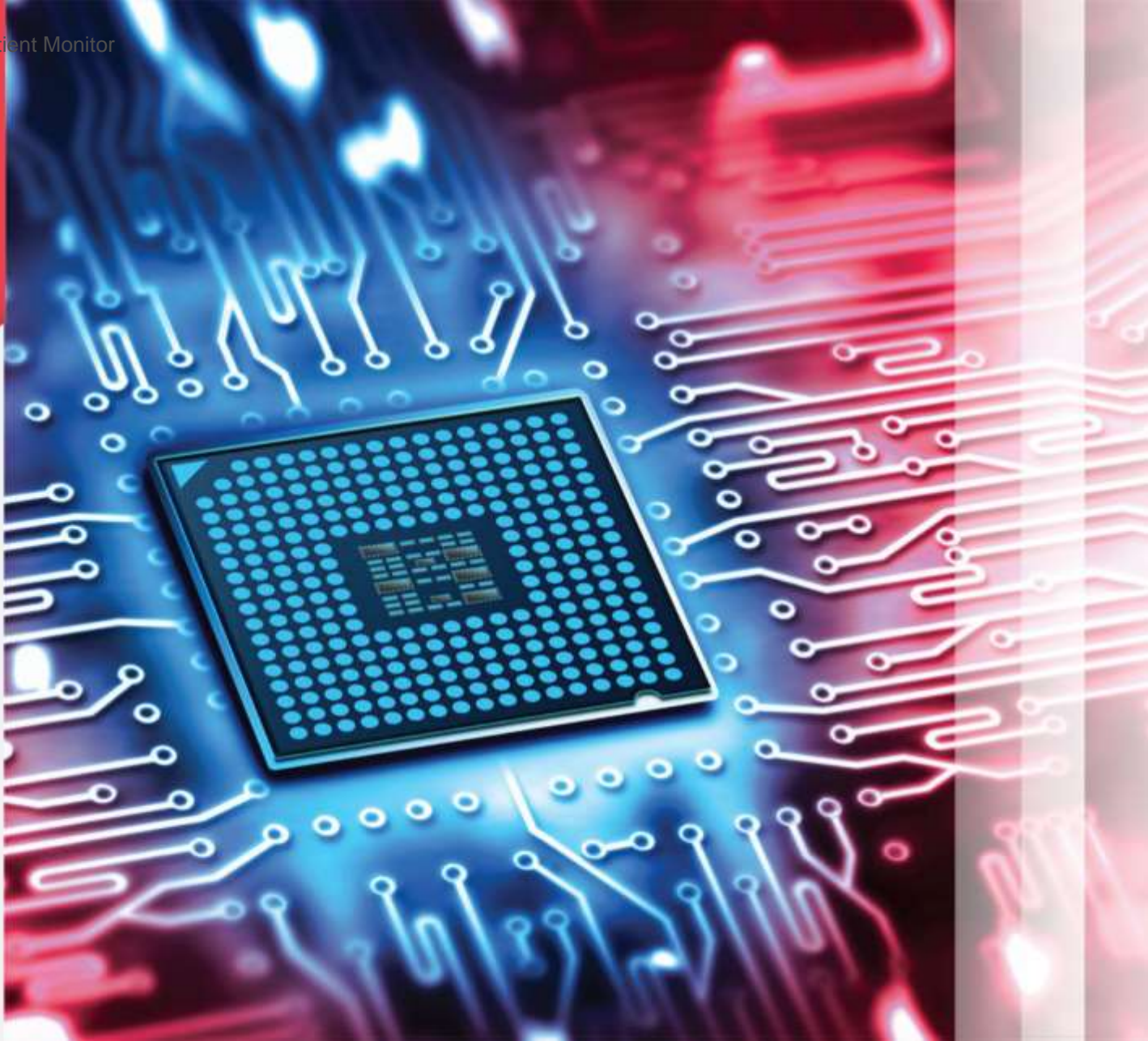
1.6

Section 1

Cardiovascular

OEM Modules

- OEM Modules
Patient Monitoring
OEM Modules





OEM Modules

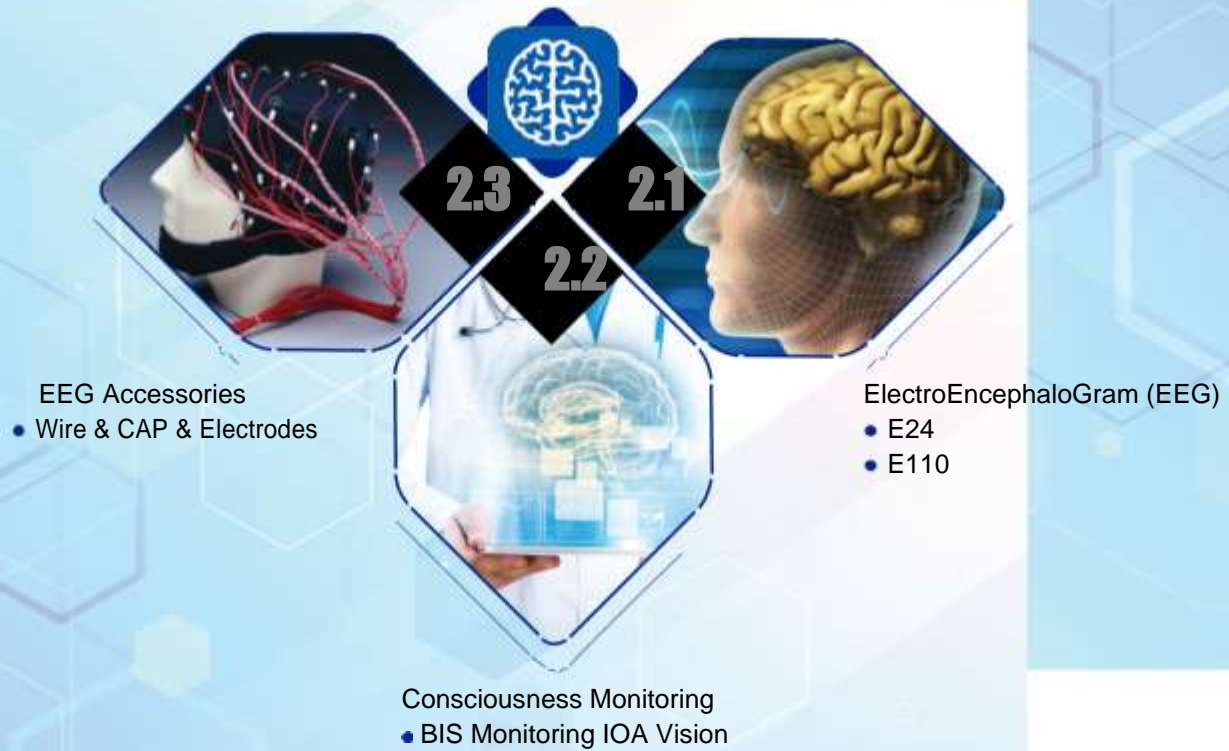
- Mainboard
- IBP & Temp Module:
2/4 Channels IBP and 2 Channels
Temp ECG & Respiration Module:
- 3,10 Channels High CMRR ECG Amplifier
3,7,12 Leads
- Thermal Recorder
- EEG Amplifier Module:
21 Channels high CMRR Amplifier





Section 2

Neurology



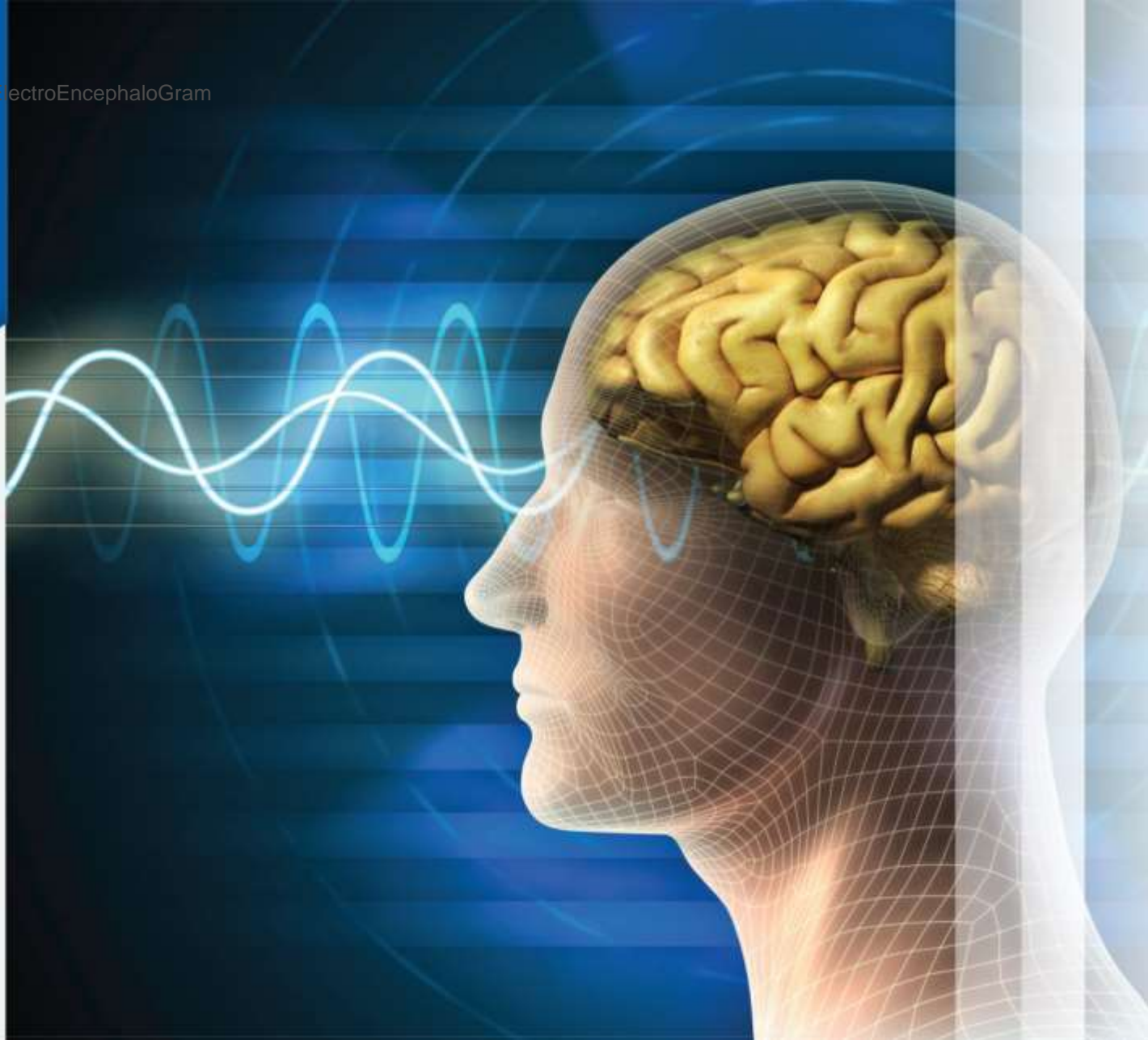


2.1

Section 2
Neurology

Electro- Encephalo- Gram (EEG)

- E24
- E110





Neuroset E24

Technical Highlights

- Compact & Portable (Laptop System)
- 21 Channels EEG +3 Extra Amplifier Channels
- FFT Analysis
- Programmable Photic Stimulator
- Color Brain Map
- Impedance Check Measurement
- USB and Serial Communication
- Compact and Portable Design
- Multi Languages Support



- *EEG Portability Is Possible Now*



Neuroset E110

Technical Highlights

- 21 Channels EEG + 3 Extra Amplifier
- Channels 15" Monitor (Laptop System)
- Thermal Printing on 216 mm Wide Continuous Paper Same as Analog EEGs
- FFT and Brain Mapping Software
- Analysis Remontage and Digital Filtering
- Impedance Check Measurement USB and Serial Communication
- Compact and Portable
- Persian and English Languages Support
- Laser Color and Monochrome Printer Support



- *EEG, Opening a Window to Neuroscience*



ISOKIA

High Tech corporation
smart nexus



2.2

Section 2
Neurology

Consciousness Monitoring

- BIS Monitoring
IOA Vision





BIS Monitoring IOA Vision

Measurement

- Index of Consciousness
- SQI, ESR, EMG and BIS Measurement

Technical Highlights

- Compliance with European Standards
- Offered Accessories And Peripherals by SAIRAN Medical Equipment Industries
- Easy Installation and Utilization
- Bluetooth Interaction with SAIRAN Patient Monitors
- Waveform Display on Patient Monitor and Saving as
- Trend Graphical Low Consumption LCD
- Minimum 6 Hours Operation Time Using External Rechargeable Battery



• *Complete Your Neurology Department*



2.3

Section 2
Neurology

EEG Accessories

- Wire & CAP & Electrodes





EEG Accessories

- EEG Wire
- EEG Electrodes
- Patient Head cap





Section 3 Operating Room Equipment



**3.3****Medical Suction**

- C55F
- C25
- MC10
- Suction Accessories

**3.2****Surgical light**

- Luminous LED5
- Luminous LED3

3.1**Smart OR**

- Modular Operating Room Walls
- Operating Room Management Systems (ORMS)



3.1

Section 3

**Operating Room
Equipment**

Smart OR

- Modular Operating Room Walls
- Operating Room Management Systems (ORMS)



**NEW**
PRODUCT

Modular Operating Room Walls

- Laminated Glass Panels
- Stainless Steel Panels
- Galvanized Panels
- Laminar Airflow
- Stainless Steel Door
- Operating Room Lighting
- Connecting to ORMS Via BMS Panel
- Various Anti-Bacterial Colors and Motifs
- Available for Operating Rooms, ICU, CCU,
- CSR and ... Fast Installation

- *Ultimate Elegance and Sterilized Implementation*





Operating Room Management Systems (ORMS)

- Operating Room Video Source Integration (HDMI, SDI, VGA, DVI, TCP/IP, PACS)
- Video Routing
- Video Streaming
- Video Recording (USB, NAS, SAN)
- Surgical Light Control
- Video Conferencing
- BMS Control Panel
- Music Control Panel
- HIS & PACS Control Panel
- RFID Reader

• *Now the Operating Room is Under Your Control*



High Tech corporation smart nexus

ISOKIA

High Tech
Corporation Smart nexus



3.2

Section 3

**Operating Room
Equipment**

Surgical light

- Luminous LED5
- Luminous LED3





Luminous LED 5

Technical Highlights

- Multicolor Medical LEDs
- Capability of Imaging Surgery Area Using Full HD Camera
- (Optional) Light Focus Adjustment
- Controllability Using Smart Hospital
- System Color Temperature Adjustment
- Integrated Laser Pointer
- Emergency Battery Backup (Optional)
- Monitor Display for Showing Surgery Required
- Images Video Conferencing
- Controllability Using Mobile, Tablet and Remote Control



- *Perfect Shadowless Partner of Surgeon*



Luminous LED 3

Technical Highlights

- Multicolor Medical LEDs
- Light Focus Adjustment
- Controllability Using Smart Hospital
- System Color Temperature Adjustment
- Integrated Laser Pointer
- Emergency Battery Backup
- (Optional) Monitor Display for Showing Surgery Required Images
- Controllability Using Mobile, Tablet and Remote Control



• *Perfect Shadowless Partner of Surgeon*



Technical Data of ISOKIA LED5 and LED3 Surgical Light



Illuminance (kLUX)	160	130	
Color Temperature (Kelvin)	3500, 3750, 4000, 4250 4500,	3500, 3750, 4000, 4250	
	4750	4500, 4750	
Focusable Light Field Size(mm)	180-300	170 - 270	
Color Rendering Index (Ra)	92	92	
Working Distance (cm)	70 - 140	70 - 140	
Number of LEDs	45	30	
Life Time of LEDs	Up to 50000	Up to 50000	
Mount	Ceiling	Ceiling	
Power Consumption (W)	180	160	
Operating Voltage AC (V)	220	220	
Camera with Interface Board for LED5(Optional)			
Objective system	10-Fold Optical Zoom		
	12-Fold Digital Zoom		
	F=3.8 mm (wide) to 38 mm (telephoto)		
	F 1.8 to F 3.4		
Video Signal	1080 p/50		
Video Output	HDMI		
Focusing System	Automatic & Manual		
Minimum Object Distance	10 mm (wide) to 800 mm (telephoto)		
Resolution (Megapixel)	2.38		
Power Consumption (W)	6		
Dimension (mm)	45.6 *48.8 *78		
Weight (g)	260		



3.3

Section 3

Operating Room
Equipment

Medical Suction

- C55F
- C25
- MC10
- Suction Accessories





MEDICA C55F

Technical Highlights

- High Vacuum: -90 kPa, 675 mmHg
- High Flow: 50 L/min
- Dimensions: 965x510x480 mm
- Weight: 17kg
- Safety Classification: IPX1
- In Accordance with
EN1079-1, EN 60601-1, EN 60601-2 Standards
- Fast Vacuum Build Up
- Quiet in Operation
- Hygienic and Easy to Use

Application

- Plastic Surgery
- General Surgery
- Neurosurgery
- Outpatient Surgery Centers
- Emergency Units



Extreme Vacuum Is Now Available



MEDICA C25

Technical Highlights

- High Vacuum: -80 kPa, 600 mmHg
- High Flow: 20 L/min
- Dimensions: 300x180x350 mm
- Weight: 6 kg
- Safety Classification: IPX1
- In Accordance with
EN1079-1, EN60601-1, EN60601-2 Standards
- Small, Lightweight and Portable Design
- Various Vacuum Levels
- Quiet in Operation
- Easy to Use Operating Elements



- *Best Choice for an Ambulance*





MEDICA MC10

Technical Highlights

- High Vacuum: -40 kPa , 300 mmHg
- High Flow: 16 L/min
- Dimensions: 350x180x300 mm
- Weight: 6 kg
- Safety Classification: IPX1
- Small, Lightweight and Portable
- Various Vacuum Levels
- Quiet in Operation
- Easy to Use Operating Elements



When Children Need Their Own Suction Unit

Suction Accessories

- Jar 1 ,2 ,3 Liter
- Lid 1 ,2 ,3 Liter
- Over Fill Protection
- Suction Bag & Canister
- Patient Tube
- Jar Holder
- Bacterial Filter
- Pedal Switch



Suction Trolley

- Extremely Impact Resistant
- Antistatic Wheels



ISOKIA
High Tech
corporation
smart nexus

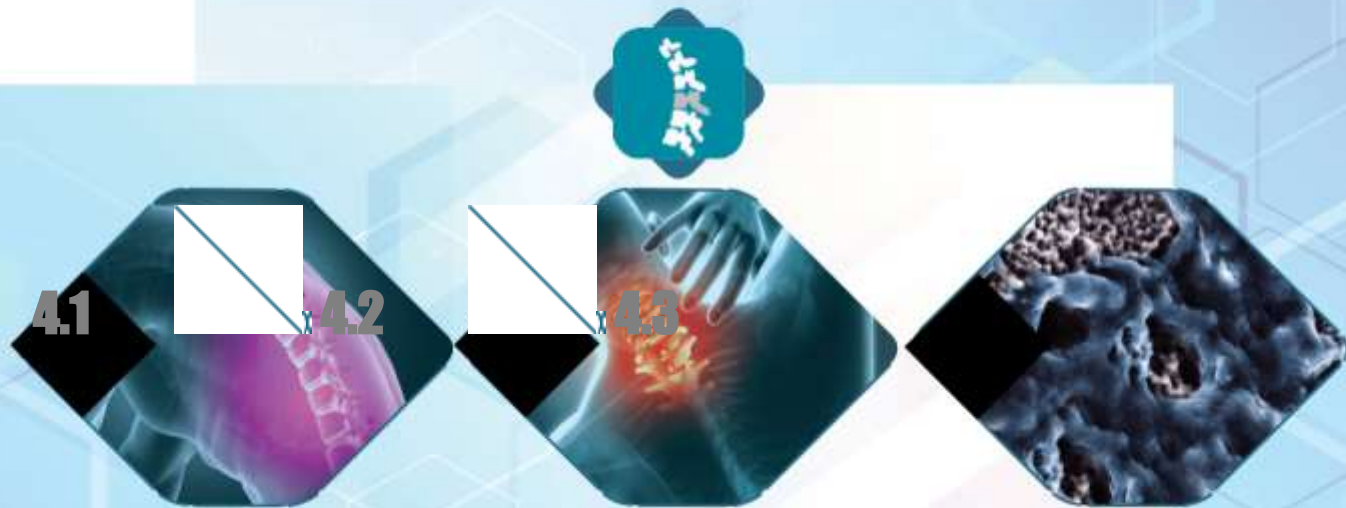




Section 4

Spinal Implants





Lumbar Stabilization

- Lumbar Intervertebral Fusion Cages
- Lumbar & Thoracic Stabilization System
- Iliac Screw
- Dynamic Rod
- Universal Pedicle Screw
- Interspinous Spacer
- Lumbar Expandable Corpectomy Cage

Cervical Stabilization

- Cervical Stabilization System
- Cervical Intervertebral Fusion Cages
- Cervical Expandable Corpectomy Cage
- Mesh Corpectomy Cage
- Cervical Plating System

OsteoConductive Surface Technology

- Nano-HA Coating Technology
- Nano-Ti Coating Technology



4.1

Section 4

Spinal Implants

Lumbar Stabilization

- Lumbar Intervertebral Fusion Cages
- Lumbar & Thoracic Stabilization System
- Iliac Screw
- Dynamic Rod
- Universal Pedicle Screw
- Interspinous Spacer
- Lumbar Expandable Corpectomy Cage



Lumbar Intervertebral Fusion Cages

Lumbar intervertebral fusion cages are indicated to be implanted through posterior aspect of lumbar column.

PLIF intervertebral fusion cage



Enhanced stability with transverse ridges on superior and inferior surfaces.

Diagnosis of the cage position in radiographic scans through titanium alloy pins.

Cages are manufactured from PEEK polymer with radiolucence advantage to allow observation of bone fusion.

Optimized bone graft spacing accelerating the fusion of adjacent vertebrae.

TLIF intervertebral fusion cage



Lumbar & Thoracic Stabilization System

This system is intended for static stabilization of lumbar and thoracic vertebrae in treatment of severe spinal injuries in lumbar & thoracic levels.

- Manufactured from High Strength Titanium Alloy



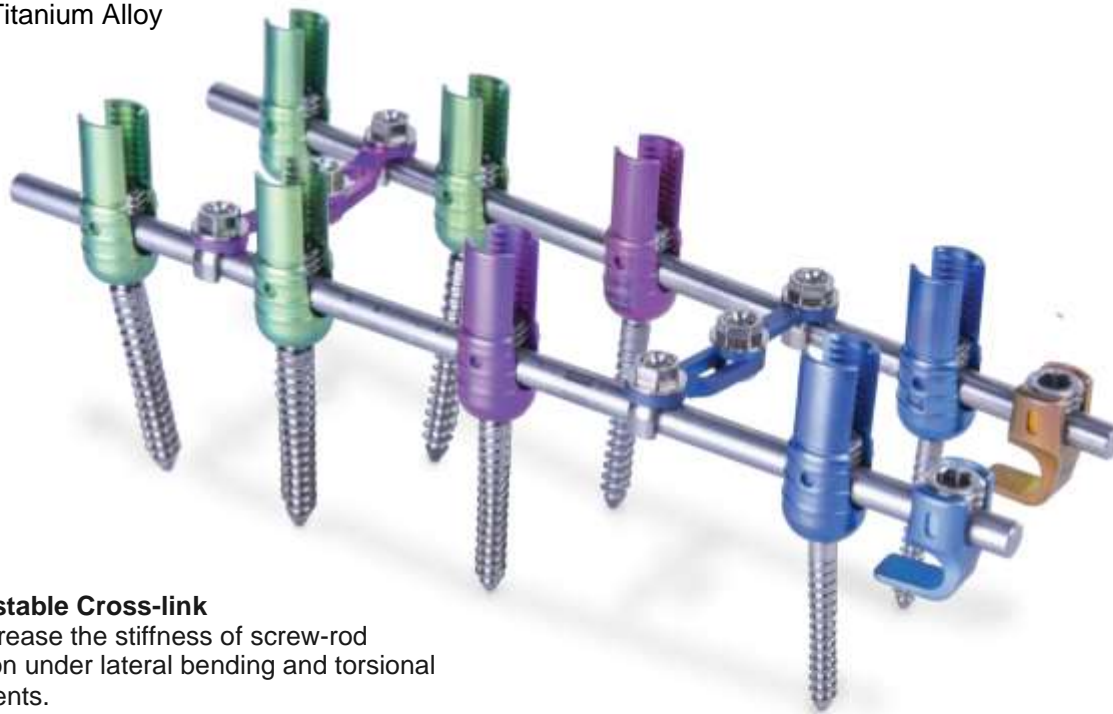
Lumbar Hook

for enhancement of biomechanical strength at non fixed levels.



Adjustable Cross-link

to increase the stiffness of screw-rod fixation under lateral bending and torsional moments.



Iliac screw with cap and rod holder suitable for treatment of severe injury at the lower vertebrae of lumbar or sacral with involvement of ilium.



Dynamic Rod with an universal joint to provide micro-movement of spinal fixation for improvement of patient functionality.



Universal Pedicle Screw with dual inserting nut and curved locking washer suitable for scoliosis treatment

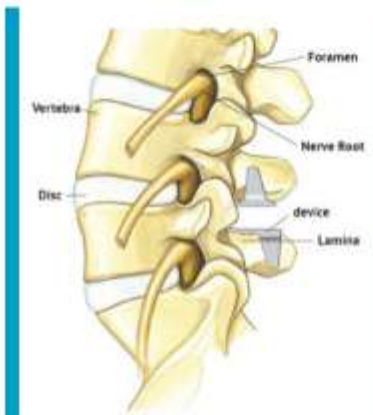


Interspinous Spacer

This implant is intended for treatment of mild herniated disc to limit the range of motion in extension of spinal column.



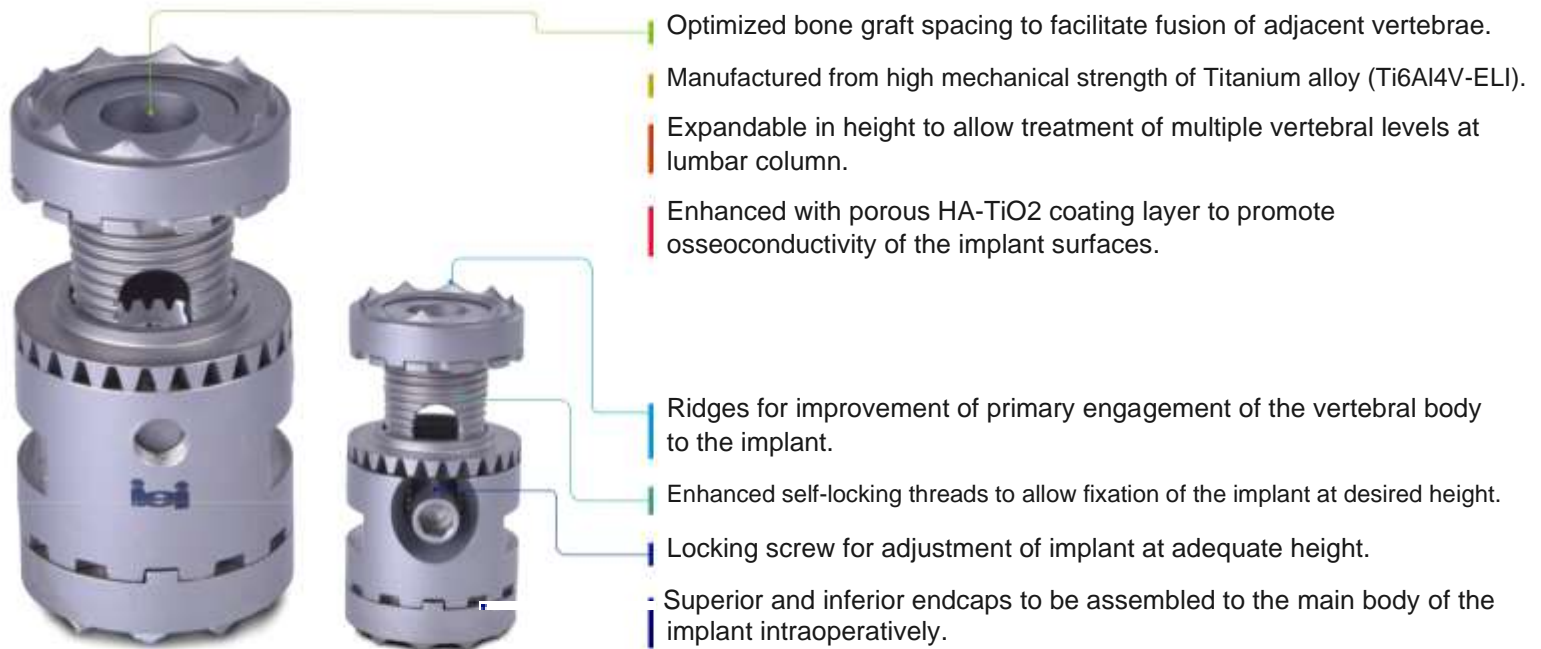
- Anatomic low-profile implant
- Proven implant design with substantial clinical history.
- Preservation of the range of motion in flexion of Spinal Column.
- Manufactured from high strength titanium alloy (Ti6Al4V-ELI)
- Enhanced surface biocompatibility and corrosion resistant with anodized TiO₂ coating.
- Deep interlaminar insertion
- Protect neurological structures
- Preservation of the disc



U shape to reduce stress on spinous processes.

Lumbar Expandable Corpectomy Cage

This implant is intended for treatment of severe degenerated or fractured vertebral bodies in lumbar column.





4.2

Section 4

Spinal Implants

Cervical Stabilization

- Cervical Stabilization System
- Cervical Intervertebral Fusion Cages
- Cervical Expandable Corpectomy Cage
- Mesh Corpectomy Cage
- Cervical Plating System



Cervical Stabilization System

This system is intended for static stabilization of cervical vertebrae in treatment of severe spinal injuries in cervical column.

- Manufactured from High Strength Titanium Alloy



Adjustable Cross-link to increase the stiffness of screw-rod fixation under lateral bending and torsional moments.



Cervical Hook for enhancement of biomechanical strength at non-fixed levels.



Cervical Intervertebral Fusion Cages

Cervical intervertebral fusion cages are indicated to be implanted through anterior aspect of cervical column.

Cage-Plate assembly



Optimized Bone Graft Spacing accelerating the fusion of adjacent vertebrae.

Cages are manufactured from PEEK polymer with radiolucence advantage to allow observation of bone fusion.

Enhanced with Transverse Ridges on Superior and Inferior Surfaces for Mechanical Integration with vertebrae endplates.

Diagnosis of the cage position in radiographic scans through titanium alloy pins.

Cervical Cage-Spacer

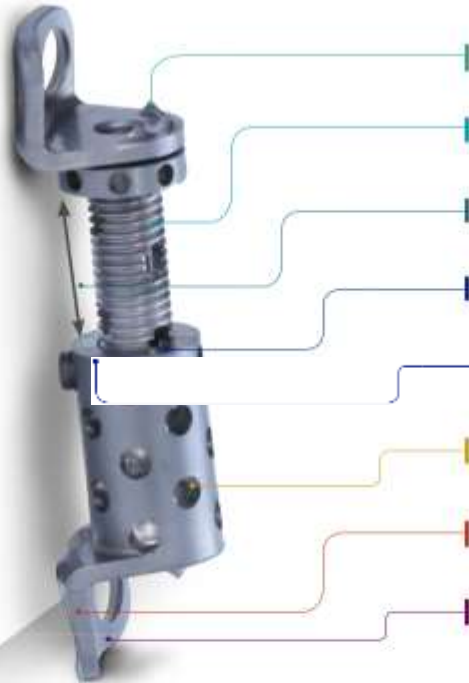


Cervical Bladed Cage



Cervical Expandable Corpectomy Cage

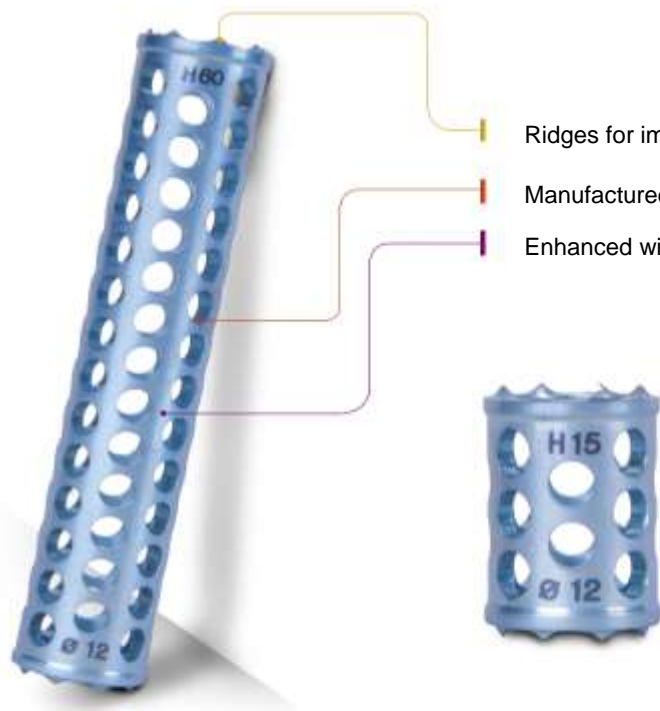
This implant is intended for treatment of severe degenerated or fractured vertebral bodies in cervical column.



- Ridges for improvement of primary engagement of the vertebral body to the implant.
- Enhanced self-locking threads to allow fixation of the implant at desired height.
- Expandable in height to allow treatment of multiple vertebral levels at cervical column.
- Manufactured from high mechanical strength of Titanium alloy (Ti6Al4V-ELI).
- Locking screw for adjustment of implant at adequate height.
- Optimized bone graft spacing to facilitate fusion of adjacent vertebrae.
- Endplates for enhancement of fixation stability to the vertebrae.
- Enhanced with porous HA coating layer to promote osseointegration of the implant surfaces.

Mesh Corpectomy Cage

This implant is intended for treatment of severe degenerated or fractured vertebral bodies in cervical column.



Ridges for improvement of primary engagement of the vertebral body to the implant.

Manufactured from high mechanical strength of Titanium alloy (Ti6Al4V-ELI).

Enhanced with porous HA coating layer to promote osseointegration of the implant surfaces.

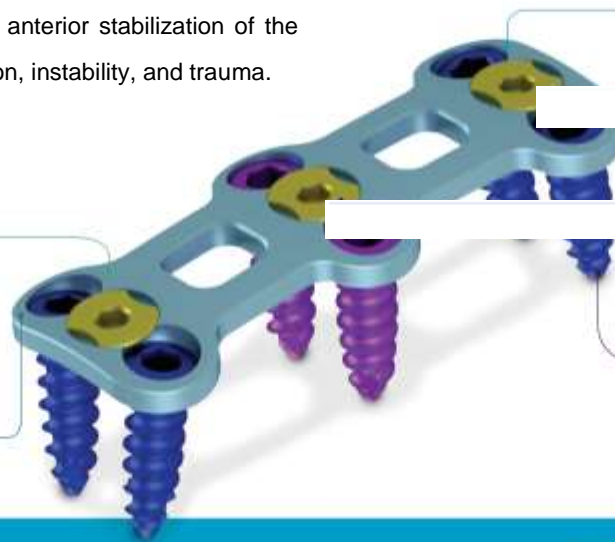
- Increased bone graft spacing to facilitate fusion of adjacent vertebrae.
- Available in various diameters 10 ,12 ,14 mm.
- Available in various lengths from 12 to 60 mm with 3mm increment.
- Optimized mechanical strength and meshing holes on the cage wall.

Cervical Plating System

Low profile Plating System is intended for anterior stabilization of the cervical injuries associated with degeneration, instability, and trauma.

Optimized biomechanical
rigidity and flexibility

Manufactured from high strength
titanium alloy (Ti6Al4V-ELI)
enhanced with TiO₂ coating layer.



Anatomic low-profile
implant with thickness of 1.8mm.

One step locking
of the clamp over the screw head.

No over-height
of clamp from the plate surface.

Self-drilling screw tip
for easy purchasing.



Longitudinal curved profile to be anatomically
seated on the anterior aspect of the cervical column.

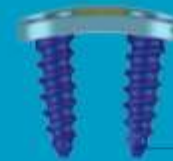
Angular fixation of the screw in longitudinal axis

Plate variety
of 1 to 4 levels,
each in various
lengths with 2 to
4 mm increment



Transverse curved profile
to be anatomically seated on the
anterior aspect of the cervical column.

Angular fixation of the
screw in transverse axis.





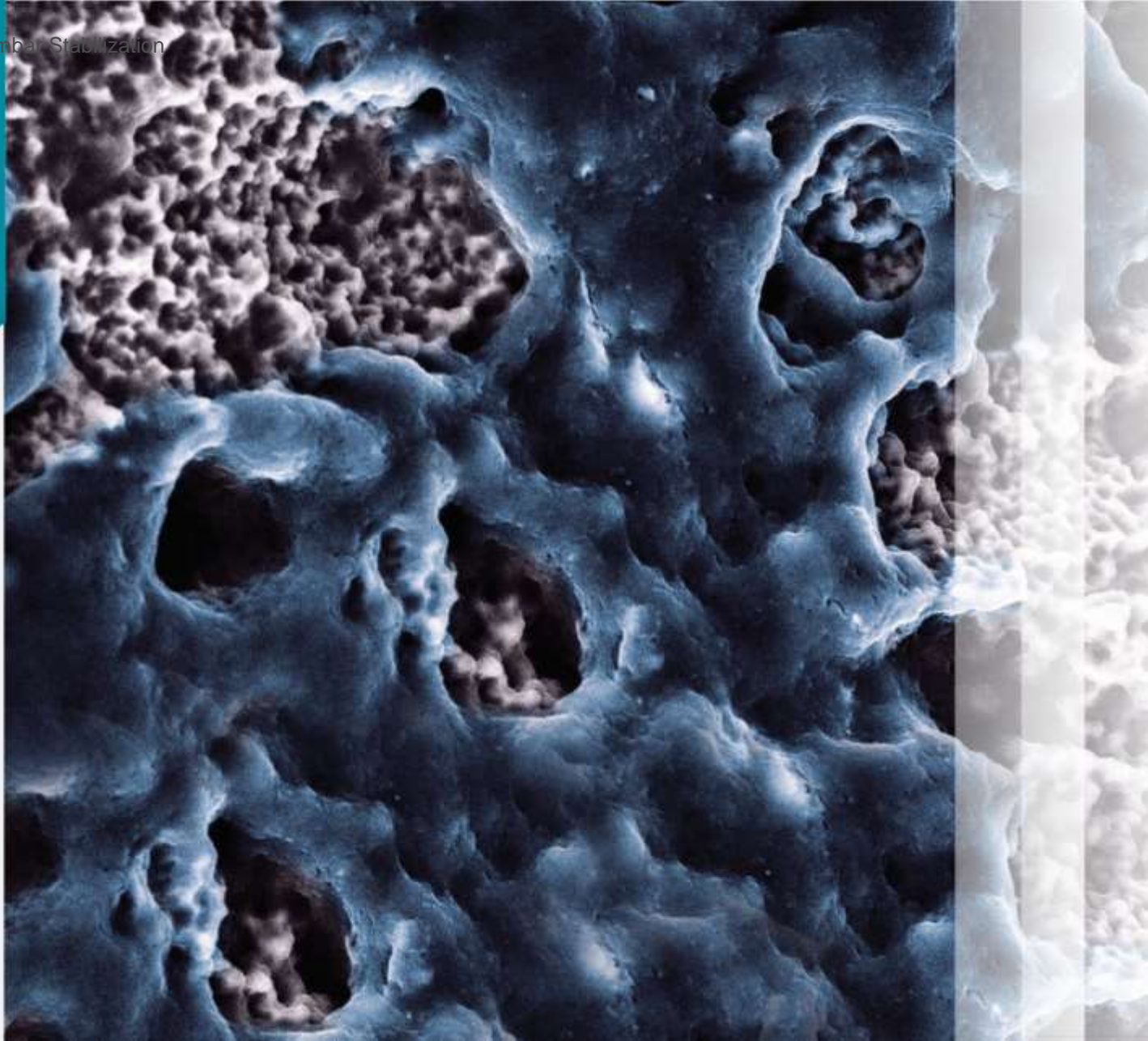
4.3

Section 4

Spinal Implants

Osteo- Conductive Surface Technology

- Nano-HA Coating Technology
- Nano-Ti Coating Technology



Nano-HA Coating Technology

This technology would enhance the osteoconductivity of the implant surfaces manufactured from titanium or titanium alloys.

Applicable for Pedicle Screws, Lateral Mass Screw, Mesh Corpectomy Cages, Expandable Corpectomy Cages, Screws for Anterior Stand-alone fusion.

Long-term effectiveness of osseointegration at the interface of bone-implant, particularly trabecular bone.

Increased bone-ingrowth through the surface of the implant.

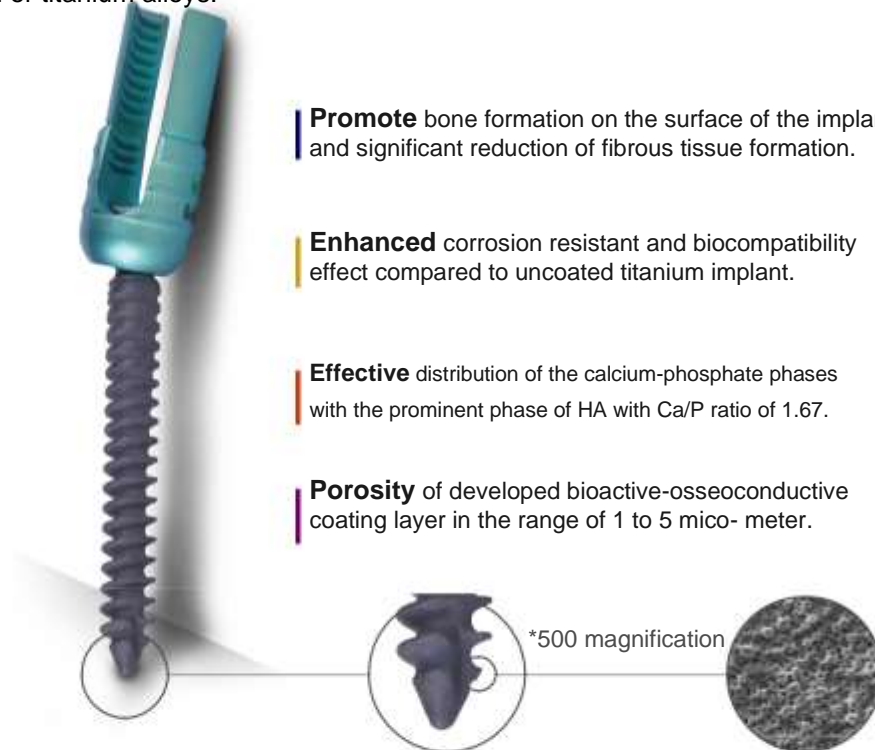
Enhanced adhesion of the coating layer to the screw threads, particularly at thread crest.

Promote bone formation on the surface of the implant and significant reduction of fibrous tissue formation.

Enhanced corrosion resistant and biocompatibility effect compared to uncoated titanium implant.

Effective distribution of the calcium-phosphate phases with the prominent phase of HA with Ca/P ratio of 1.67.

Porosity of developed bioactive-osseoconductive coating layer in the range of 1 to 5 micro- meter.



Nano-Ti Coating Technology

This technology would enhance the osteoconductivity of the implant surfaces manufactured from PEEK polymer.

- | **Applicable** for PEEK interbody fusion cages.
- | **Osseointegrative coating** layer for promotion of cell adhesion and proliferation.
- | **Enhanced** osseointegration of the implant-vertebral to reduce the risk of implant migration.
- | **Nano thickness** coating layer.
- | **Coated with** 100% pure titanium to prevent toxicity effects.
- | **No debonding** of the coated layer during impaction force of cage implantation.



Promotion of PEEK hydrophilic characteristics to increase flow of body fluid at the interface of the cage-vertebral body.



- | **Long-term** effectiveness of osseointegration at the interface of cage-vertebral body.
- | **Accelerate** bony fusion of the adjacent vertebrae at the implanted segment.
- | **Increased formation** of the apatite and prevent formation of fibrous tissue at the interface of cage- vertebral body.



Section 4 Smart Hospital Solutions

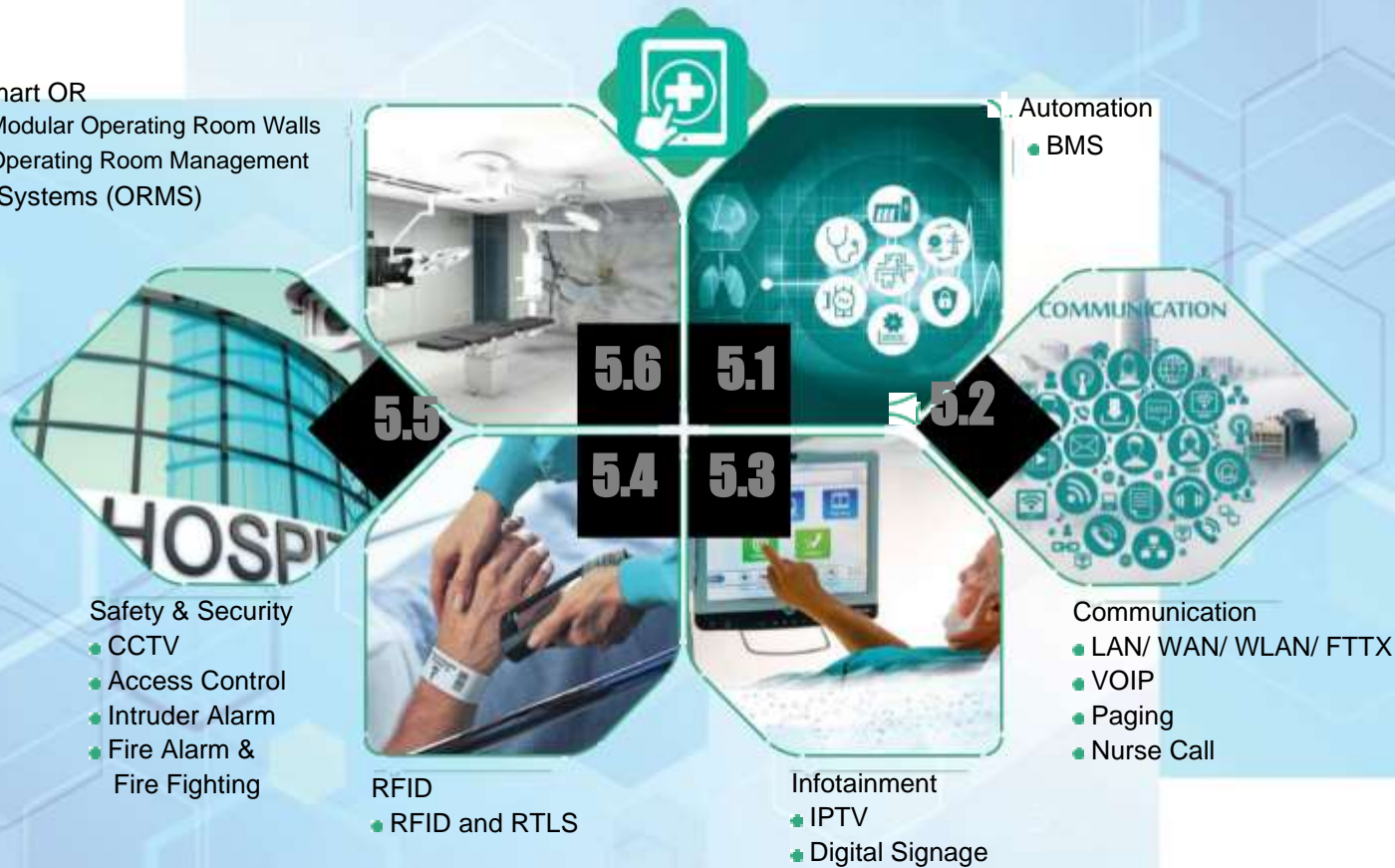
SAIRAN
medical
company

Smart OR

- Modular Operating Room Walls
- Operating Room Management Systems (ORMS)

Automation

- BMS





5.1

Section 5

**Smart Hospital
Solutions**

Automation

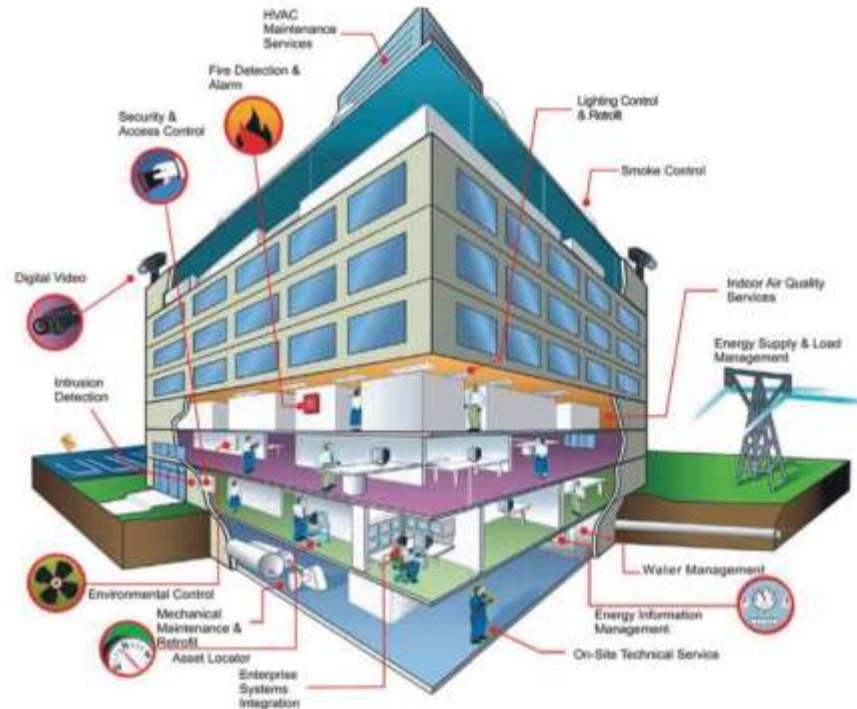
- **BMS**
Building Management
Systems





BMS

- Hospital Lighting Control
- Hospital Curtain Control
- Hospital HVAC Control
- Hospital Energy Management
- Hospital Data Center Control
- Access Control Integration
- CCTV Integration
- Remote Monitoring Via LAN or Internet 2D or 3D Graphical User Interface Various
- Protocols (TCP/IP, MODBUS, KNX)



Optimizing Hospital Energy Consumption

High Tech corporation smart nexus



5.2

Section 5

**Smart Hospital
Solutions**

Communication

- LAN/WAN/WLAN/
FTTX
- VOIP
- Paging
- Nurse Call

COMMUNICATION





LAN/WAN/WLAN/FTTX

- 10Gb/s Back Bone Network Speed
- Wireless 802.11ac Support Structured
- Copper and Fiber Cabling Fiber Optic
- Networks (FTTH/FTTX) FFTH for
- Hospital Data Infrastructure



Total Solution Integration

VOIP

- Software Base or Embedded PBX Centers
- Video Phone Support
- Dect Phone Support
- Paging Integration





86

5.2. Communication

Paging

- IP Base Amplifiers
- Minimum Cabling Requirements
- Design Flexibility

Flexible and Expandable Paging Design



Nurse Call

- Full IP Base
- Call recorder
- Connecting HIS



WWW.ISOKIA.COM



5.3

Section 5

**Smart Hospital
Solutions**

Infotainment

- IPTV
- Digital Signage





IP TV

- Live TV
- Video on Demand Service
- Music on Demand Service
- HIS Integration
- PACS Integration
- BMS Integration
- Installing on Bedside Patient Console or Smart Displays



Hospital or a Five-Star Hotel ... !

Digital Signage

- Doctors Information
- Hospital Services
- Medical Services Advertising
- Remote Content Management
- Various Templates
- Various Schedules
- Optimum Network Infrastructure Bandwidth
- Installing on Smart Displays





5.4

Section 5
Smart Hospital
Solutions

RFID

- RFID and RTLS





RFID and RTLS

- Different Readers Antennas and Tags
- Medical Equipment Tracking
- Surgical Instruments or Drugs Tracking
- Patient Tracking
- Real-time Location System via WLAN Network for Doctors, Nurses , Patients and Equipment
- Wavehouse Management
- Easily Integrated with All ERP or HIS, Softwares
- Easily ORMS Integration



- *Locate Everything & Everybody Quickly*



5.5

Section 5

**Smart Hospital
Solutions**

Safety & Security

- CCTV
- Access Control
- Intruder Alarm
- Fire Alarm & Fire Fighting





CCTV

- IP Base
- Video Analytic
- Camera Monitoring Software and Hardware

Increase Your Hospital Security Level



Access Control

- RFID Card
- Finger Print
- Face Detection
- Plate Recognition





Intruder Alarm

- Microwave Sensors
- Passive and Active Infrared Sensors
- Microphonic Sensors
- Fiber Optic Sensors



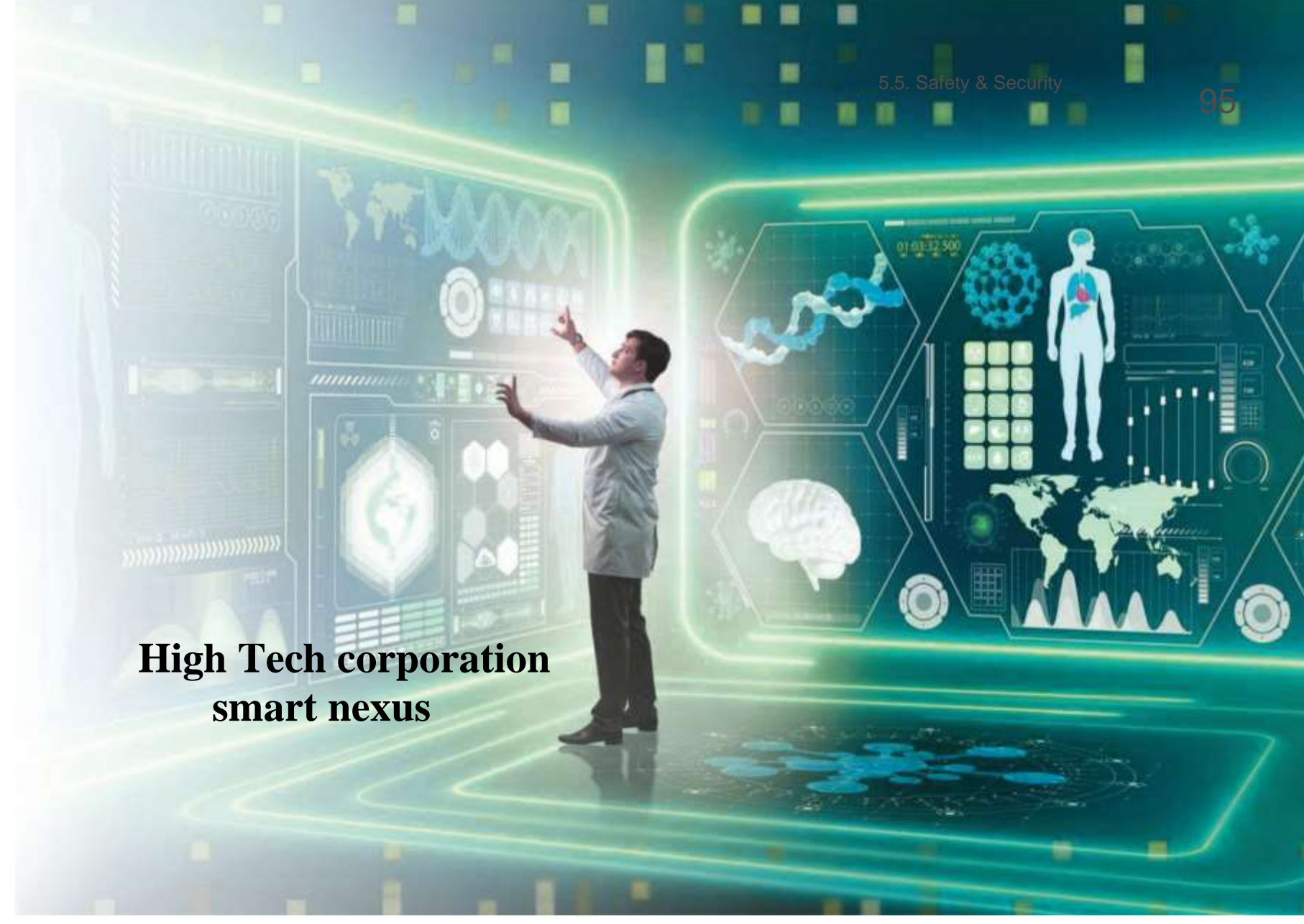
- *Sometimes Safety is More Important than Security*

Fire Alarm and Fire Fighting

- Smoke Detection
- Heat Detection
- BMS Integration



**High Tech corporation
smart nexus**





5.6

Section 5

**Smart Hospital
Solutions**

Smart OR

- Modular Operating Room Walls
- Operating Room Management Systems (ORMS)





Modular Operating Room Walls

- Laminated Glass Panels
- Stainless Steel Panels
- Galvanized Panels
- Laminar Airflow
- Stainless Steel Door
- Operating Room Lighting
- Connecting to ORMS Via BMS Panel
- Various Anti-Bacterial Colors and Motifs
- Available for Operating Rooms, ICU, CCU,
- CSR and ... Fast Installation

- *Ultimate Elegance and Sterilized Implementation*





Operating Room Management Systems (ORMS)

- Operating Room Video Source Integration (HDMI, SDI, VGA, DVI, TCP/IP, PACS)
- Video Routing
- Video Streaming
- Video Recording (USB, NAS, SAN)
- Surgical Light Control
- Video Conferencing
- BMS Control Panel
- Music Control Panel
- HIS & PACS Control Panel
- RFID Reader



- *Now the Operating Room is Under Your Control*





ISOKIA

High Tech Corporation
Smart nexus



قابلیت نمایش تصویر
طرح دیوارها



Section 6 Services





Medical Equipment Calibration Laboratory

Formally Certified by the General Bureau of Medical Equipment

Quality Control and Calibration of Following Equipment:

- ECG Monitoring Equipment
- Patient Monitoring Equipment
- Pulse Oximeter Equipment
- Blood Pressure Equipment
- Defibrillator Equipment
- Infusion Device
- Transcutaneous Pacer Device
- Patient Ventilator Equipment
- Safety Tests on all Types of Medical Equipment



■ Defibrillator Analyzer



■ Patient Simulator



■ NIBP Calibrator



■ Infusion Device Analyzer



■ SpO₂ Simulator



■ Gas Flow Analyzer

102



Section 7

History

Section 7

History

Cardioset ASA 9

- 19" Diagonal Display
- ECG + HR
- SpO₂ % + PR
- RESP + RR
- NIBP
- 2 Temp + 2 IBP
- CO₂ (Mainstream)

Options

- Arrhythmia Analyzer
- ST Segment Detection
- 2.0" Thermal Recorder
- CO₂ (Sidestream)



Cardioset VINA 9

- 15" Diagonal Display
- ECG + HR
- SpO₂ % + PR
- RESP + RR
- NIBP
- 2 Temp+ 2 IBP
- CO₂ (Mainstream)

Options

- Arrhythmia Analyzer
- ST Segment Detection
- 2.0" Thermal Recorder
- CO₂ (Sidestream)





Cardioset PARS

- 15" ,17" ,19" and 21" Color TFT Display (User Selectable)
- ECG, RESP, SpO₂ %, NIBP, IBP (2 Channels), Temp (2 Channels), Multi-Gas/CO₂/O₂
- Depth of Anesthesia
- Sidestream CO₂ , ST/ Arrhythmia
- Thermal Recorder, 12 leads ECG



Cardioset X110

- 10.4" Color TFT Display
- ECG, RESP, SpO₂ %, IBP (2 Channels), Temp (2 Channels) , NIBP
- CO₂, Thermal Recorder

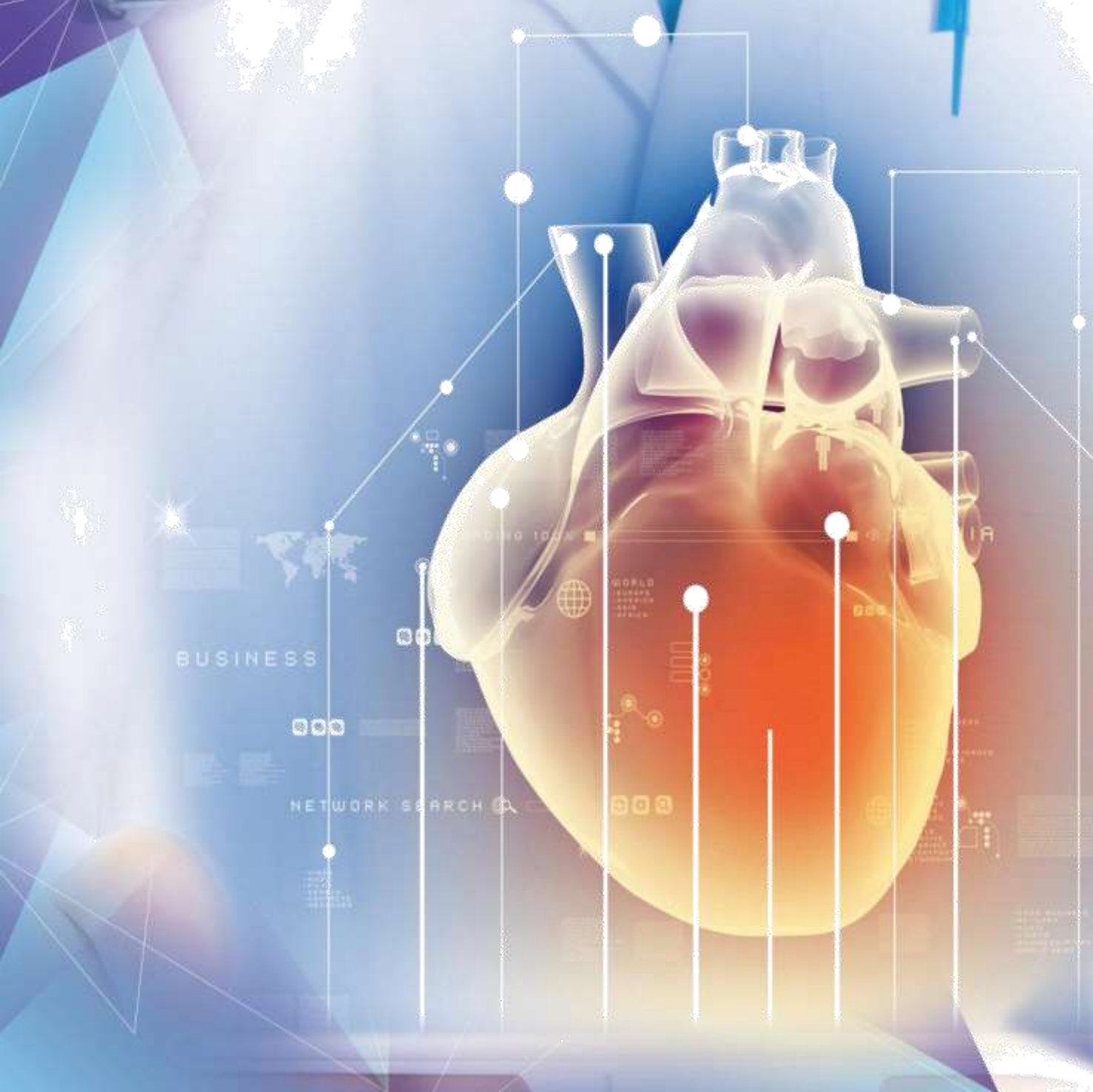


Cardioset S110

- 6.7" Color TFT Display
- ECG, RESP, SpO₂ %, NIBP



High Tech Corporation
Smart nexus





Cardiovascular



OEM Modules

- OEM Modules



Patient Monitor

- ARAD P10+
- SmartView
- ARAD P10
- FX7
- LX110
- Sina 5



Defibrillator/Monitor

- RELIVE DM5
- RELIVE AED5



Patient Monitor Accessories

- IOA Vision
- Mi-Cap C1
- Capnography & Multigas Accessories
- Monitor Accessories
- Trolley & Stand

Telemedicine Solutions

- Health Care SADRA A15
- SAMA
- Web Based
- T220
- T110

Central Station

- Live W110



Patient Monitor

- ARAD P10+
- SmartView
- ARAD P10
- FX7
- LX110
- Sina 5





Cardioset ARAD P10+

Parameters

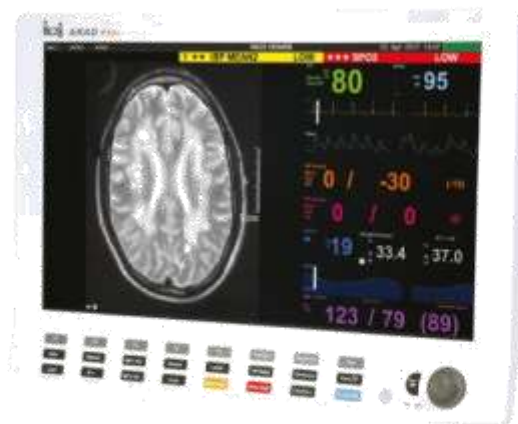
- Waveforms: ECG (3, 7, 12 leads), RESP, Pleth, EEG (One line), IBP (2 channels)
- Numeric Parameters: HR, RR, SpO₂%, PR, NIBP, Temp, IBP (2 channels)

Options

- Arrhythmia Analyzer
- ST Segment Detection
- EMG & BIS
- CO₂ (SideStream)
- Multigas Analyzer (N₂O, O₂, AA1, AA2)
- ECG Out
- 2.0" Thermal Recorder
- Remote Patient Monitoring

Key Features

- Intuitive 19" Wide Multi Touch Display
- Wi-Fi / Bluetooth Communication Support
- New Graphical User Interface
- Full HD External Display Support
- Full Customizable Screen Views
- Dynamic Auto Size Waves
- Dual Bed Monitoring



- *Reliable PACS & HIS Support*



SmartView Vital Signs Monitors

Parameters

- Waveforms: ECG (3, 7, 12 leads), RESP, Pleth, EEG (One line), IBP (2 channels)
- Numeric Parameters: HR, RR, SpO₂%, PR, NIBP, Temp, IBP (2 channels)

Options

- Arrhythmia Analyzer
- ST Segment Detection
- EMG & BIS
- Impedance Cardiography (ICG)
- CO₂ (SideStream)
- Multigas Analyzer (N₂O, O₂, AA1, AA2)
- ECG Out
- 2.0" Thermal Recorder
- Remote Patient Monitoring
- Two Additional IBP Channel



■ SmartView MP22



■ Smartview MP19





Key Features

- Equipment Class: Class I, Internally Powered, IPX1, Continuous Operation
- PACS & HIS Support
- Wi-Fi / Bluetooth Communication Support
- Intelligent Integrated Software with Comprehensive Vital Signs Monitoring
- Humanized Operation Interface
- High Resolution Display Option Improves Viewing
- Replaceable Wide Displays (12, 15, 19, 22 Inch)
- Capability of Using Both Multi-Touch Screen Display & Keypad
- Fully Customizable Modules
- Dynamic Auto Size Waves
- Mother & Baby Patient Monitor
- Comprehensive Care with Vitals and Viewing
- Dual Bed Monitoring
- Wired and Wireless Networking with Continues Data Transfer
- External USB/Wi-Fi Printer Support

• *Multi-touch Screen, Stylish New Design*



■ **SmartView MP15**



■ **SmartView MP12**



Cardioset ARAD P10

Parameters

- Waveforms: ECG (3, 7, 12 leads), RESP, Pleth, EEG (One line), IBP (2 channels)
- Numeric Parameters: HR, RR, SpO₂%, PR, NIBP, Temp, IBP (2 channels)

Options

- Arrhythmia Analyzer
- ST Segment Detection
- EMG & BIS
- CO₂ (SideStream)
- Multigas Analyzer (N₂O, O₂, AA1, AA2)
- ECG Out
- 2.0" Thermal Recorder
- Remote Patient Monitoring



Key Features

- 19" Wide Screen Display
- User Friendly Software
- Convenient Rotary Knob & Shortcut Keys
- ECG Recording, NIBP Report and Trend for All Parameters
- Printable Disclosure
- Lightweight (< 5 Kg Including Battery)

• *All You Expect from a Vital Signs Monitor*





Cardioset FX7

Parameters

- Waveforms: ECG (3, 7 leads), RESP, Pleth, IBP (2 channels)
- Numeric Parameters: HR, RR, SpO₂%, PR, NIBP, Temp, IBP (2 channels)

Options

- Arrhythmia Analyzer
- ST Segment Detection
- CO₂ (Sidestream)
- 2.0" Thermal Recorder

Key Features

- 15" color TFT Display
- Simple and User Friendly Operation
- ECG Recording, NIBP Report and Trend for All Parameters
- Lightweight (< 5 Kg Including Battery)



- *Fast boot less than 5 seconds*



Cardioset LX110

Parameters

- Waveforms: ECG (3, 7 leads), RESP, Pleth, IBP (2 channels)
- Numeric Parameters: HR, RR, SpO₂%, PR, NIBP, Temp, IBP (2 channels)

Options

- Arrhythmia Analyzer
- ST Segment Detection
- CO₂ (Sidestream)
- 2.0" Thermal Recorder

Key Features

- 12.1" color TFT Display
- ECG Recording, NIBP Report and Trend for All Parameters
- Lightweight (< 5 Kg Including Battery)



- *Compact & Impressive Design*





Cardioset Sina 5

Parameters

- Waveforms: ECG (3, 7 leads), Pleth, RESP, IBP (2 channels)
- Numeric Parameters: HR, RR, SpO₂ %, PR, NIBP, Temp, IBP (2 channels)

Options

- Arrhythmia Analyzer
- ST Segment Detection
- CO₂ (Sidestream)
- GPS / GPRS
- 2.0" Thermal Recorder

Key Features

- 5" color TFT Display
- ECG Recording, NIBP Report and Trend for All Parameters
- Extra Lightweight (< 2 Kg Including Battery)



- *Minimum Size, Maximum Portability*

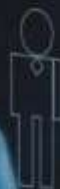


Patient Monitor Accessories

- IOA Vision
- Mi- Cap C1
- Capnography & Multigas Accessories
- Monitor Accessories
- Trolley & Stand

MEDICAL

Health Care
Bedside
Hospital
Pharmacist
Nurse
Dentist
First Aid
Surgeon
Emergency



Health Care
Doctor
Hospital
Pharmacist
Nurse
Dentist
First Aid
Surgeon
Emergency





BIS Monitoring IOA Vision

Measurement

- Index of Consciousness
- SQI, ESR, EMG and BIS Measurement

Technical Highlights

- Compliance with Europe Standards
- Offered Accessories and Peripherals by SAIRAN Medical Equipment Industries
- Easy Installation and Utilization
- Bluetooth Interaction with SAIRAN Patient Monitors
- Waveform Display on Patient Monitor and Saving as Trend
- Graphical Low Consumption LCD
- Minimum 6 Hours Operation Time Using External Rechargeable Battery



- *What Does Complete the Operating Room ?*



Capnograph Mi-Cap C1

Measurement

- Mainstream Sensor Type
- Non-Dispersive Infrared Gas Analysis Technique
- Compact Multi-Channel Infrared Detector

Technical Highlights

- CO₂ Measurement Range: 0 -19.7%
0 -150 mmHg, 0 - 20 kPa
- CO₂ Resolution: 0.1 mmHg
- CO₂ Measurement Accuracy:
0 - 40 mmHg: ± 2 mmHg
41 - 70 mmHg: $\pm 5\%$ of Reading
71 - 100 mmHg: $\pm 8\%$ of Reading
101 - 150 mmHg: $\pm 10\%$ of Reading
- Respiration Rate: 3 -150 Brpm
- Respiration Rate Accuracy: $1\% \pm 1$ Brpm
- Circumstance Pressure: 86 to 106 kPa
- Power Demand: $5\text{ V} \pm 5\%$ (max ripple 200 mVp-p)
- Power Consumption: <150 mA
- Storage Condition: 40°C to 70°C , $< 90\%$ RH,
Non-Condensing
- Operating Condition: 5°C to 50°C , < 10 to 90%
RH, Non-Condensing



- *Analyze Each Cycle of Respiration System*



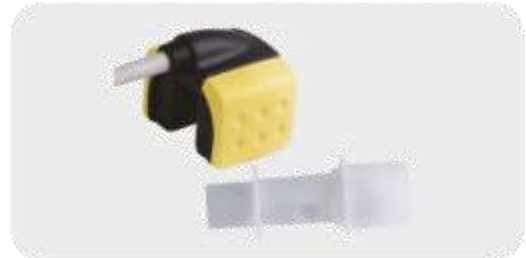


Capnography & Multigas Analyzer Accessories

- Respiration CO₂ Probe
- Extension Cable
- Adapter & Nomoline



- IRMA CO₂ Probe
- Extension Cable
- Adapter & Nomoline



- ISA CO₂ Probe
- Extension Cable
- Adapter & Nomoline





Monitor Accessories

Nellcor / Nonin SpO₂

- Adult, Pediatric and Neonate
- Adhesive, Reusable and Multisite Sensors



NIBP CUFFs

- Cuff for Adult, Pediatric and Neonate
- Single Use Cuffs



IBP

- Periodical Reusable Transducers
- Dome, Clamp and Bracket
- Extension Cable



**Temp**

- Temperature Probe-Skin (Adult, Pediatric and Neonate), YSI Compatible
- Temperature Probe-Rectal (Pediatric), YSI Compatible

**ECG**

- ECG Patient Cable 3,5,10 Wires
- Extension Cable (3m, 5m)

**Battery**

- Li-ion 12 v / 2.3 Ah
- Sealed Acid 12 v / 2.3 Ah





Trolley & Stand

Monitor Trolley

- Left and Right Rotation
- Bracket Horizontal/Vertical



Monitor Stand

- Easy to Use
- Excellent Quality Material & Design



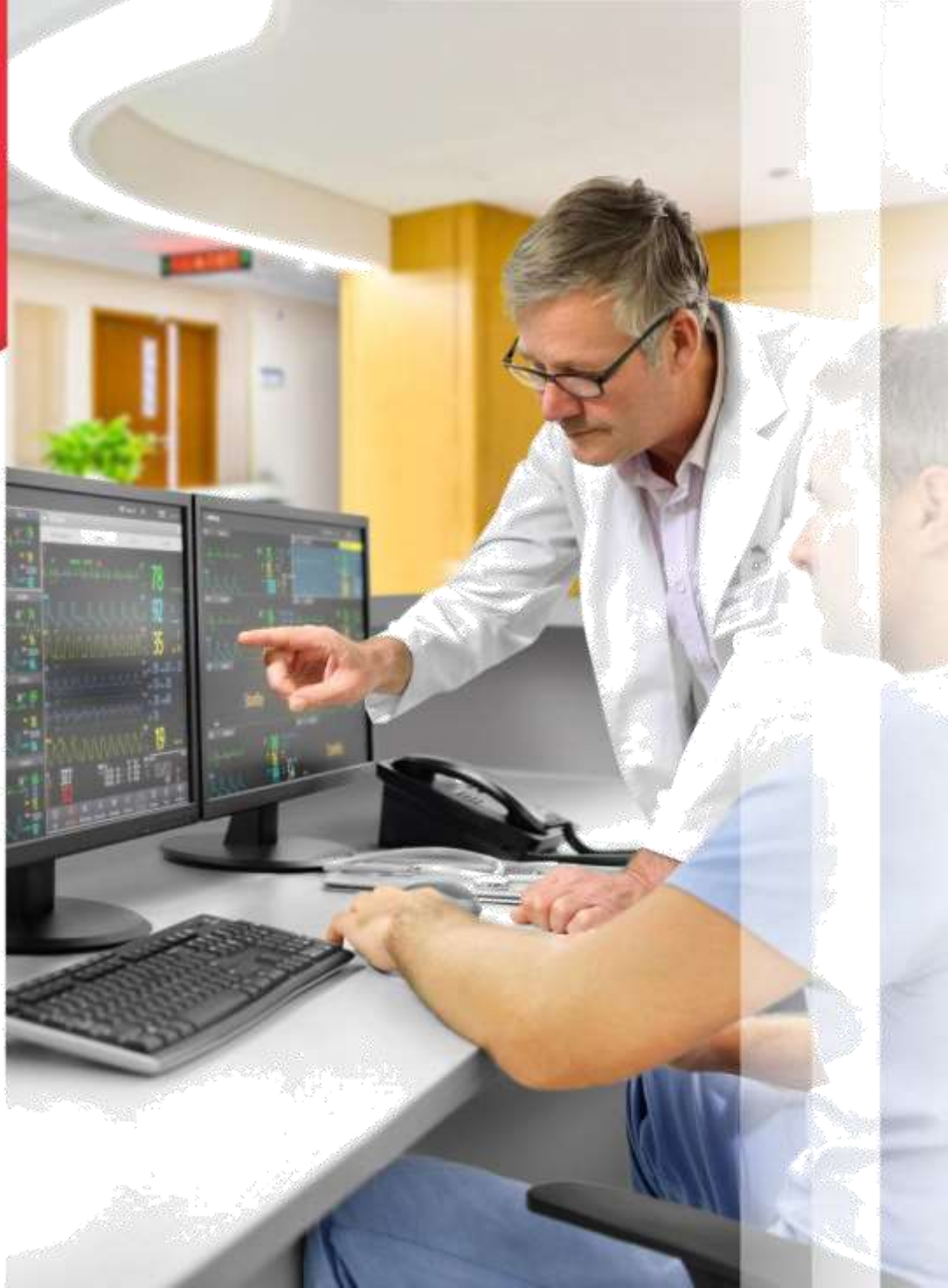
A close-up photograph of a pair of hands, likely belonging to a healthcare professional, gently cupping a bright red, glossy heart. The hands are positioned in the foreground, with the fingers slightly curled around the heart. In the background, a stethoscope is visible, resting on a light-colored surface, possibly a medical table or counter. The overall scene conveys a sense of care, health, and technology.

**High Tech
Corporation
Smart nexus**



Central Station

- Live W110
Wide Screen
Central Station





Live W110

Parameters

- Vital Signs of 16 Telemetry Systems or Bedside Patient Monitors through Wireless Network/LAN
- Up to 5 Graphs Simultaneously for Each Patient Including ECG (I, II, III, aVL, aVR, aVF, V), SpO₂%, Pleth, RESP, IBP1 and IBP2
- Patient Information, Continuous Records History and Nurse Calls

Key Features

- Wide 20" Touch Screen Display
- Two-Way Communication with Patient Monitors
- Arrhythmia Analyzer
- Portable Thermal Recorder & LaserJet Printer Support
- User Friendly & Elegant Interface



- *Intensive Care of All Patients Simultaneously*



Telemedicine Solutions

- SADRA A15
- SAMA
- Web Based
- T220
- T110





HealthCare SADRA A15



Parameters

- ECG (3, 7, 12 leads), RESP, Pelth, IBP, SpO₂%, NIBP, Temp, CO₂
- Glucose, Lipid and PCG Measurement

Key Features

- Touch Screen 10.1" Color TFT Display
- Real Time Patient Monitoring
- GSM (2G, 3G, 4G), LAN and Wi-Fi Data Interface
- Support all UVC Standard Otoscopes
- One Channel Audio-In for Connecting Stethoscope
- Video Telephony and Consultation
- Real-Time Transmit Information to Central Viewer Station



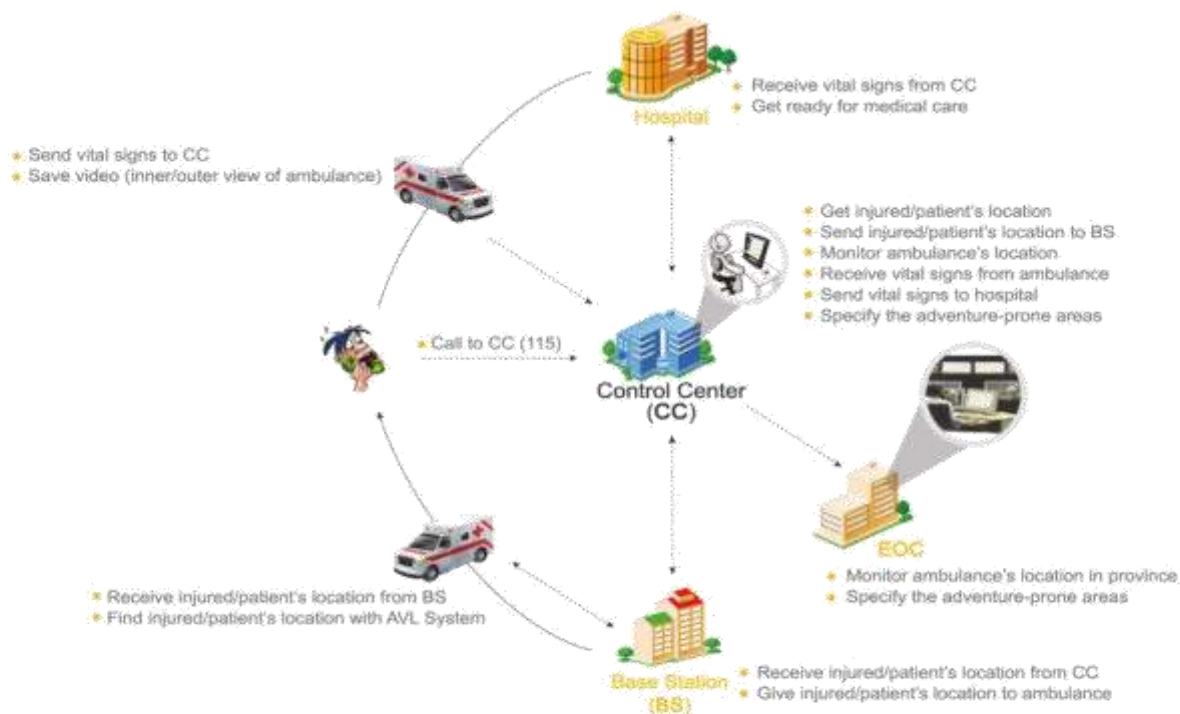
- *Transfer Information Instead of Moving Patient*





TeleMonitoring Solution (SAMA)

- Extend Patients Care Everywhere





Web Based Patient Monitors

Technical Highlights

- Access to Web Monitoring from www.sairanmed.ir Website
- Showing All Vital Signs from SAIRAN Patient Monitors
- Define Permission and Accessibility for the User
- 24 Hours Patient Care

- *Monitor Patients around the World*





Cardiopack T220

Telemetry Monitoring System

- Transmission of ECG Graph (I,II,V)
 - Storing Data for 48 Hours on microSD Memory (up to 16 GB)
 - 24 hours Operating Time for Transmission ECG Using Only 1*AA Battery
 - Provides a Graphical Screen to Display All Monitored ECG Leads
 - Nurse Call Button on the Transmitter
 - Enhances Patient Comfort with a Compact, Lightweight Design
 - Up to 16 Telemetry Transmitters Can Be Used Simultaneously in a Cardiac Care Center
 - 8 Channels Receivers with Internal Antenna
 - Frequency/Power Settings Can Be Modified in Accordance with the Local Country Regulations
 - High Reliability, Narrowband Wireless Transmission and Digital Modulation
 - In Accordance with EN60601-2-27, ANSI/AAMI EC13, IEC 60601-1, IEC 60601-2 Standards
- *Don't Confine Patient for Cardiac Care*





Cardiopack T110

Telemetry Monitoring System

- Transmission of ECG Graph (I, II, III), SpO₂ %, Pulse Rate, Plethysmograph
- Provides a Graphical Screen to Display All Monitored ECG Leads
- Nurse Call Button on the Transmitter
- 8 Channels Receivers with Internal Antenna
- High Reliability, Narrowband Wireless Transmission and Digital Modulation
- Up to 16 Telemetry Transmitters Can Be Used Simultaneously in a Cardiac Care Center
- 48 Hours Operating Time for Transmission of Both ECG and SpO₂ % Using Only 2*AA Batteries
- In Accordance with EN60601-2-27, ANSI/AAMI EC13, IEC 60601-1, IEC 60601-2 Standards



• *More Vital Signs Are Available Now with Cardiopack*



Defibrillator/ Monitor

- RELIVE DM5
- RELIVE AED5





RELIVE DM5

Defibrillator

- Energy: 1-200 J
- Waveform: Biphasic Truncated Exponential
- Mode: Manual, Cardioversion, AED
- Charging Time: Less than 6 Seconds

Noninvasive Pacing

- Waveform: Rectilinear, Constant Pulse
- Current: 0 - 200 mA
- Rate: 30 - 180 ppm
- Refractory Period: 340 ms (30-80 ppm); 240 ms (90-180 ppm)
- Mode: Demand or Fixed Rate

Numeric Parameters

- Waveforms: ECG, Pleth, IBP (2 channels), CO₂
- Numerical Parameters: HR, PR, SpO₂ %, Temp, IBP (2 channels), NIBP, EtCO₂



• *Saving Life is our Pleasure*



RELIVE AED5

- Model: Public ,Pro
- Functional Mode: ECG, Manual, AED
- Max Energy: 200 J
- Analyze Time: < 8 s
- Charge Time: < 6 s
- CPR Helper
- Audio & Visual Guide for Using the Device in Public Model



- *Ready for Use Indicator*

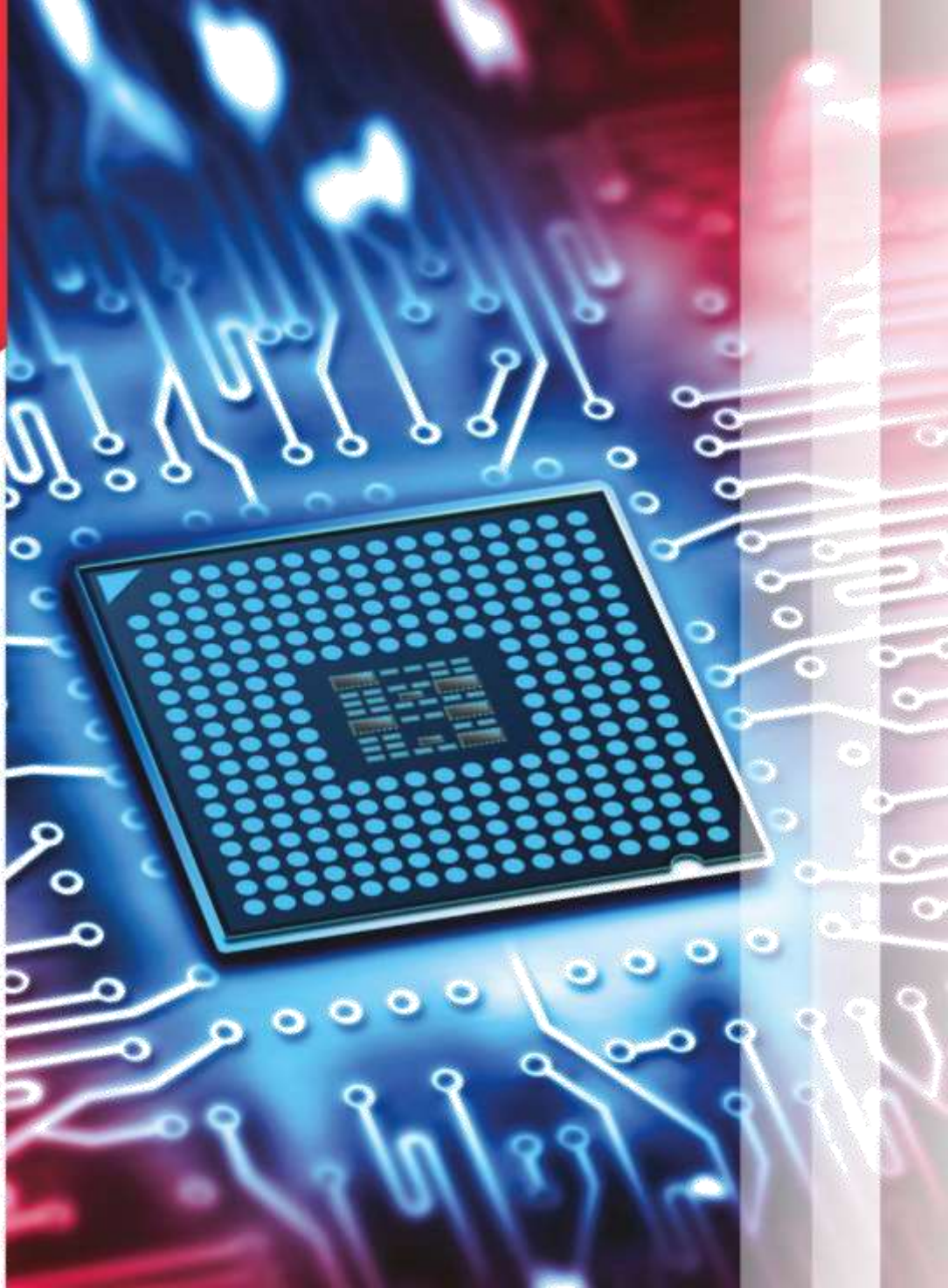






OEM Modules

- OEM Modules
Patient Monitoring
OEM Modules





OEM Modules

- Mainboard
- IBP & Temp Module:
2/4 Channels IBP and 2 Channels Temp
- ECG & Respiration Module:
3,10 Channels High CMRR ECG Amplifier
3,7,12 Leads
- Thermal Recorder
- EEG Amplifier Module:
21 Channels high CMRR Amplifier





History





et S110

edre 49

WWW.ISOKIA.COM





Neurology





EEG Accessories

- Wire & CAP & Electrodes



ElectroEncephaloGram (EEG)

- E24
- E110



Consciousness Monitoring

- BIS Monitoring IOA Vision

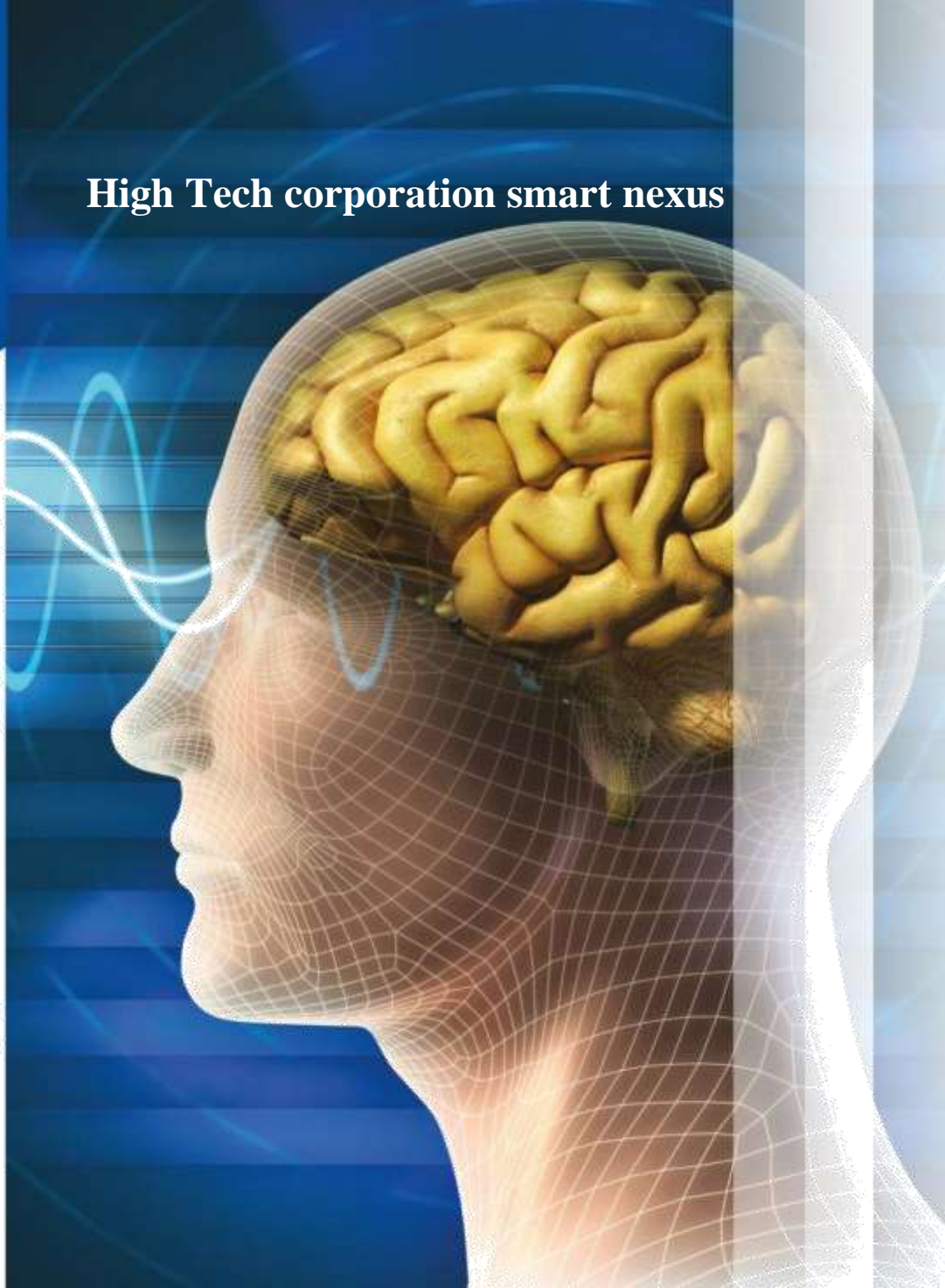




High Tech corporation smart nexus

Electro- Encephalo- Gram (EEG)

- E24
- E110





Neuroset E24

Technical Highlights

- Compact & Portable (Laptop System)
- 21 Channels EEG +3 Extra Amplifier Channels
- FFT Analysis
- Programmable Photic Stimulator
- Color Brain Map
- Impedance Check Measurement
- USB and Serial Communication
- Compact and Portable Design
- Multi Languages Support



• EEG Portability Is Possible Now



Neuroset E110

Technical Highlights

- 21 Channels EEG + 3 Extra Amplifier Channels
- 15" Monitor (Laptop System)
- Thermal Printing on 216 mm Wide Continuous Paper Same as Analog EEGs
- FFT and Brain Mapping Software Analysis
- Remontage and Digital Filtering
- Impedance Check Measurement
- USB and Serial Communication
- Compact and Portable
- Persian and English Languages Support
- Laser Color and Monochrome Printer Support



- EEG, Opening a Window to Neuroscience







Consciousness Monitoring

- BIS Monitoring
IOA Vision





BIS Monitoring IOA Vision



Measurement

- Index of Consciousness
- SQI, ESR, EMG and BIS Measurement

Technical Highlights

- Compliance with European Standards
- Offered Accessories And Peripherals by SAIRAN Medical Equipment Industries
- Easy Installation and Utilization
- Bluetooth Interaction with SAIRAN Patient Monitors
- Waveform Display on Patient Monitor and Saving as Trend
- Graphical Low Consumption LCD
- Minimum 6 Hours Operation Time Using External Rechargeable Battery



- Complete Your Neurology Department



High Tech corporation smart nexus

EEG Accessories

- Wire & CAP & Electrodes





EEG Accessories

- EEG Wire
- EEG Electrodes
- Patient Head cap



**High Tech corporation
smart nexus**

